

Series F Stainless Steel - Servo

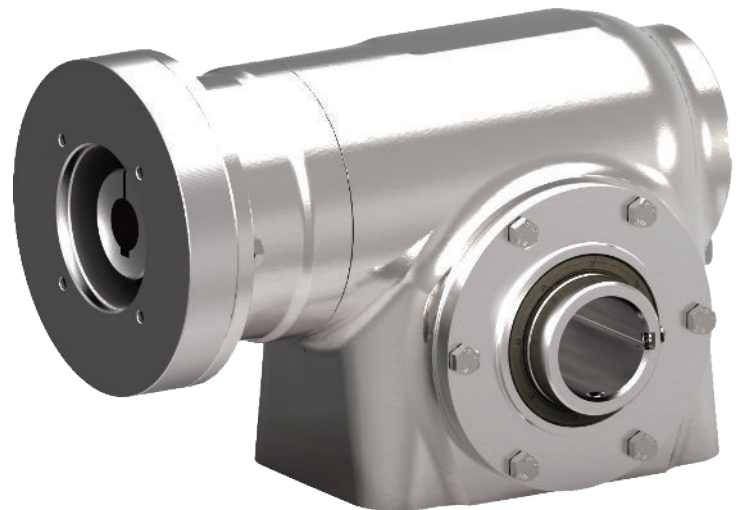
The Series F Stainless Steel-Servo gearbox provides servo motion control in a stainless steel package. The smooth contours of the housing allow fluids to wick away preventing bacteria from forming on the surface. When your application demands strict hygienic performance, look no further than Cone Drive's Series F Stainless Steel gearbox.

FOOD & BEVERAGE | PACKAGING | PHARMACEUTICAL | MEAT & DAIRY | MIXERS

MADE IN
USA

HYGENIC PRECISION

- Double-enveloping worm gearing supported with two input bearings
- 316 stainless steel adapter and housing
- Adheres to strict NSF and A3 hygienic standards and carries an ingress protection rating of IP69k
- Optional torque arm, flange, or side mounting available
- Low or standard backlash
- Best in class lead times
- 5 year warranty



 CONFIGURE & DOWNLOAD YOUR MODEL AT www.ConeTools.com SERIES F-Servo

S P E C I F I C A T I O N S

Center Distance: 39 thru 76 mm

Ratio: 5:1 thru 60:1

Nominal Backlash: 4 - 27 arcmin

Output Torque_{ConstantSpeed} : ≤ 5,950 lb-in

Output Torque_{Acceleration} : ≤ 6,380 lb-in


Input Shaft: Single or double extended




Output Shaft: Inch or metric, solid (single or double extended), hollow, shrink disc

Lubricant: Factory filled with food grade lubricant

I.P. Rating: IP 69K



 Cone Drive Operations, Inc.
240 East 12th Street
Traverse City, MI 49684, USA

 +1.888.994.2663
 orders@conedrive.com
 conedrive.com

