

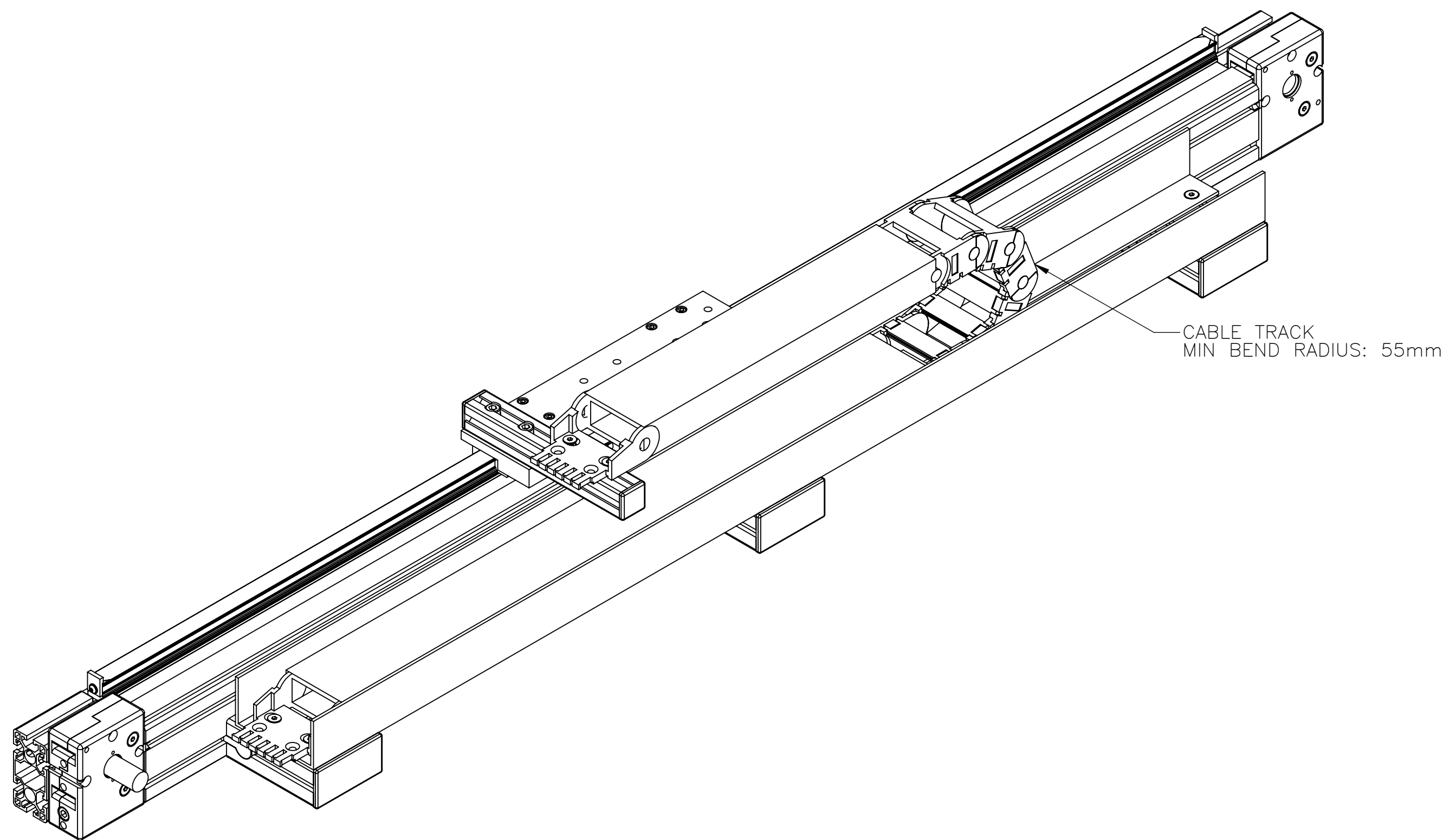
MRA-RTU-0-00- -

ENTER
TRAVEL IN INCREMENTS OF 250mm
TRAVEL LIMITS: 250mm-5650mm*

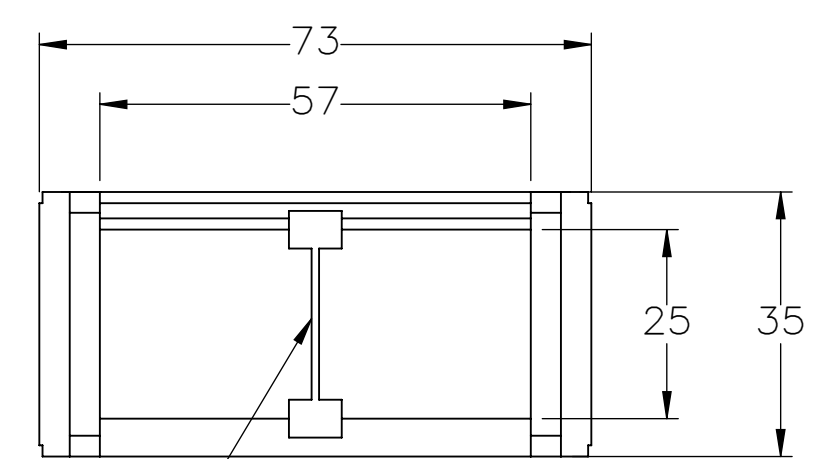
SELECT
DRIVE SHAFT LOCATION, SEE PAGE 2

SHAFTING TYPE
A0=SINGLE SHAFTED
B0=DOUBLE SHAFTED
NOTE: (IF "B" IS USED THE NUMBER WILL DESIGNATE POSITION OF SHORT SHAFT. SECOND SHAFT WILL BE 50.8mm LONG.)
AM=SINGLE SHAFTED W/ MOTOR MOUNT
BM=DOUBLE SHAFTED W/ MOTOR MOUNT

IF TRAVEL IS OUTSIDE LIMITS LISTED, CONTACT MACRON



CABLE TRACK CROSS SECTION




SEPARATOR
(EVERY OTHER LINK)

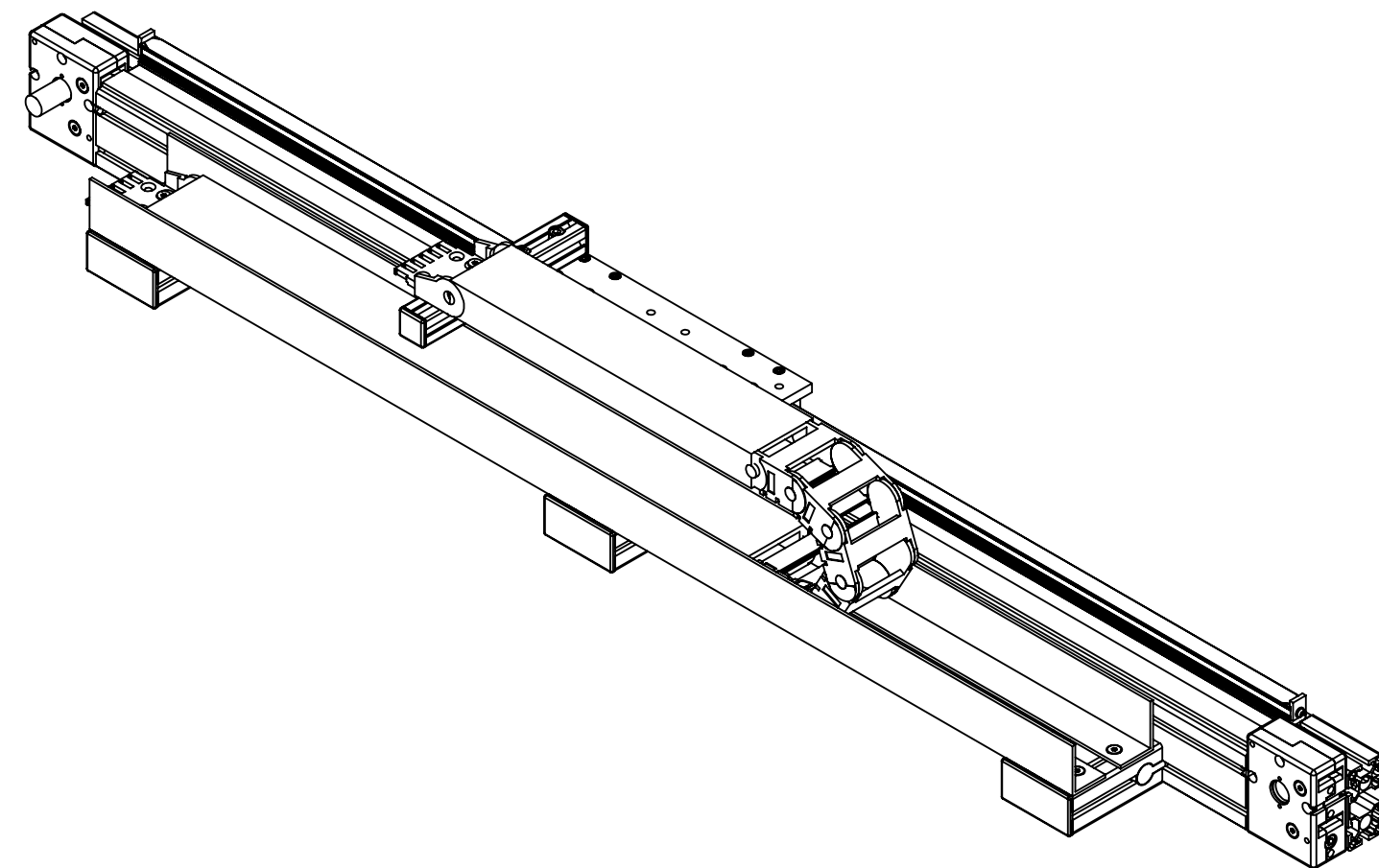
APPROVED: _____

DATE: _____

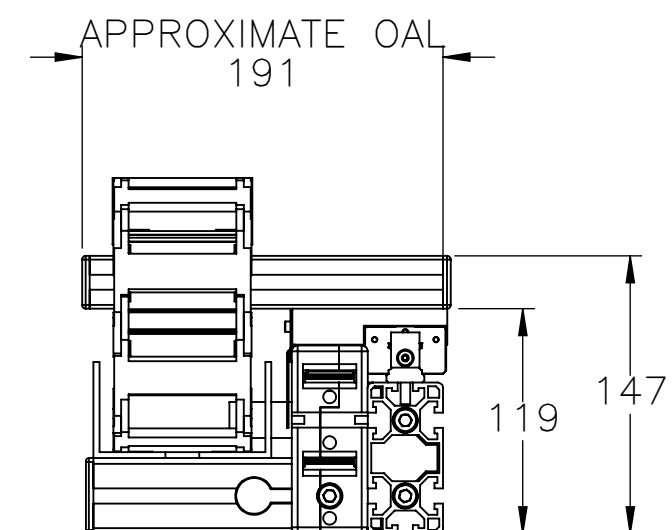
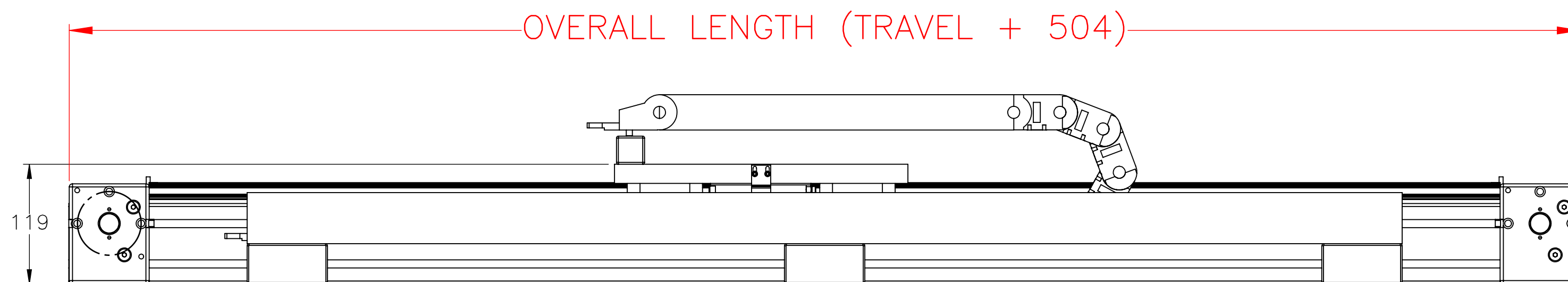
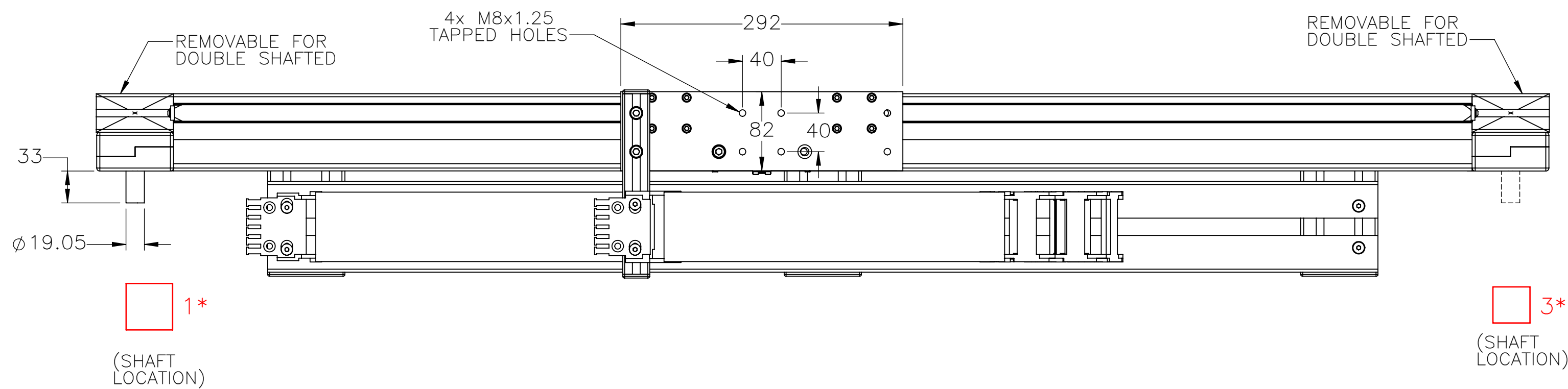
PO:REFERENCE#: _____

 MACRON DYNAMICS INC	DRAWN BY: JA DATE: 2/25/2020	MATERIAL:	TITLE: MACRON RTU SYSTEM
	CHECKED BY: -- DATE: DD/MM/YYYY	FINISH:	
	LAST SAVED BY: Tim DATE: 12/29/2021	UNLESS OTHERWISE SPECIFIED, DIMENSIONS ARE IN MILLIMETERS. TOLERANCES UNLESS NOTED OTHERWISE:	SCALE 1:1 SHEET SIZE C
	SURFACE FINISH \checkmark	BREAK ALL SHARP EDGES DIMENSIONAL LIMITS APPLY AFTER FINISHING THIRD ANGLE PROJECTION	SHEET 1 OF 3 PART NUMBER MRA-RTU-0-00-XXX-XXXX REV

PROPERTY	BASE VALUE (T=250mm)
MOVING MASS	2.67kg(+0.0225kg/25mm)
BELT MASS	0.250kg(+0.00313kg/25mm)
PULLEY PITCH DIAMETER	47.75mm (1.880")
PULLEY WIDTH	28.9mm (1.138")
PULLEY MATERIAL	STEEL
BELT WEIGHT (kg)	$((\text{TRAVEL IN METERS} \times 2) + 1) \times 0.12$
TRAVEL PER REV.	150mm
TRAVEL MIN.	150mm
TRAVEL MAX.	5650mm
CART WEIGHT (kg)	4.1
SYSTEM WEIGHT (kg)	$(\text{TRAVEL IN METERS} \times 12.5) + 10$

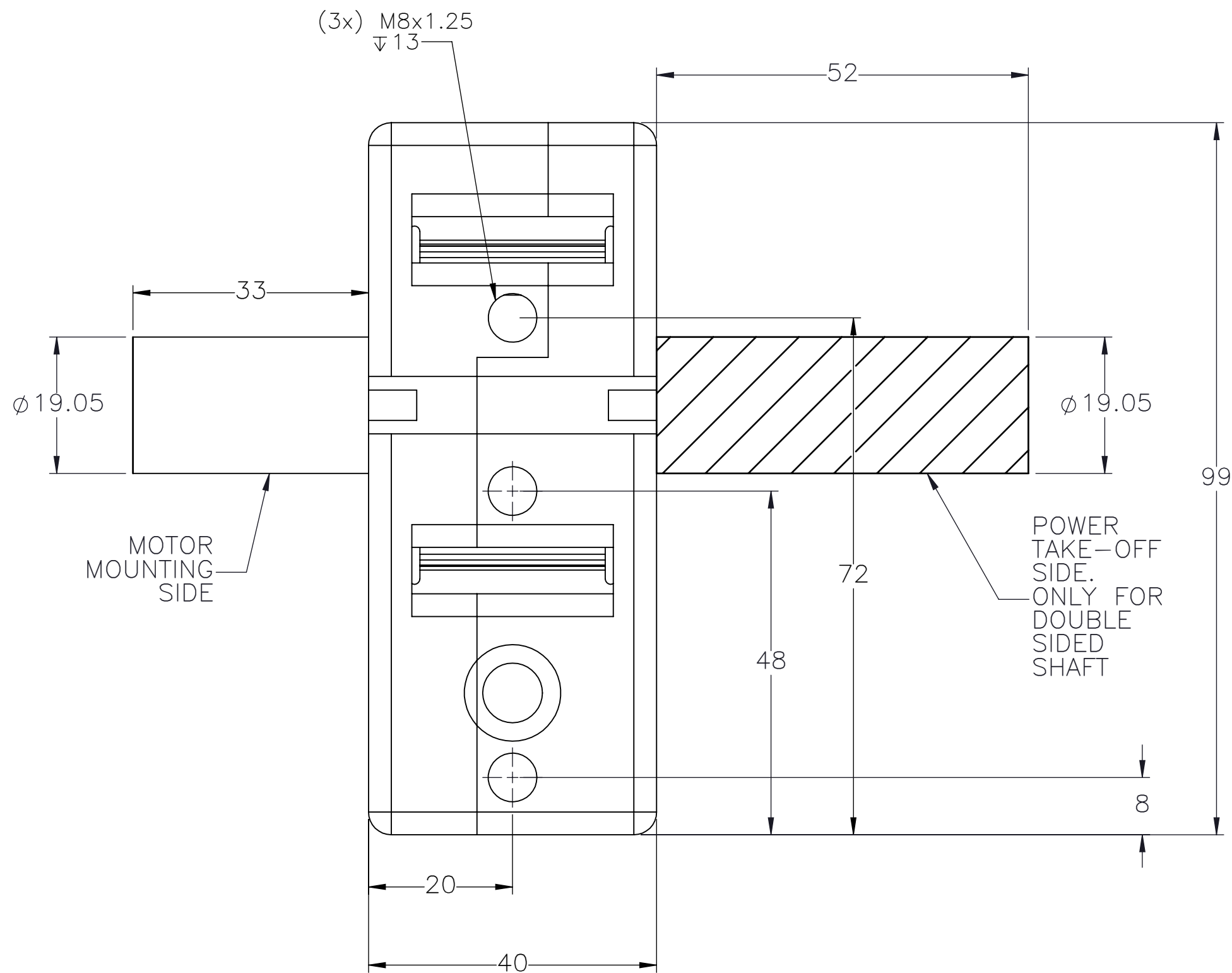
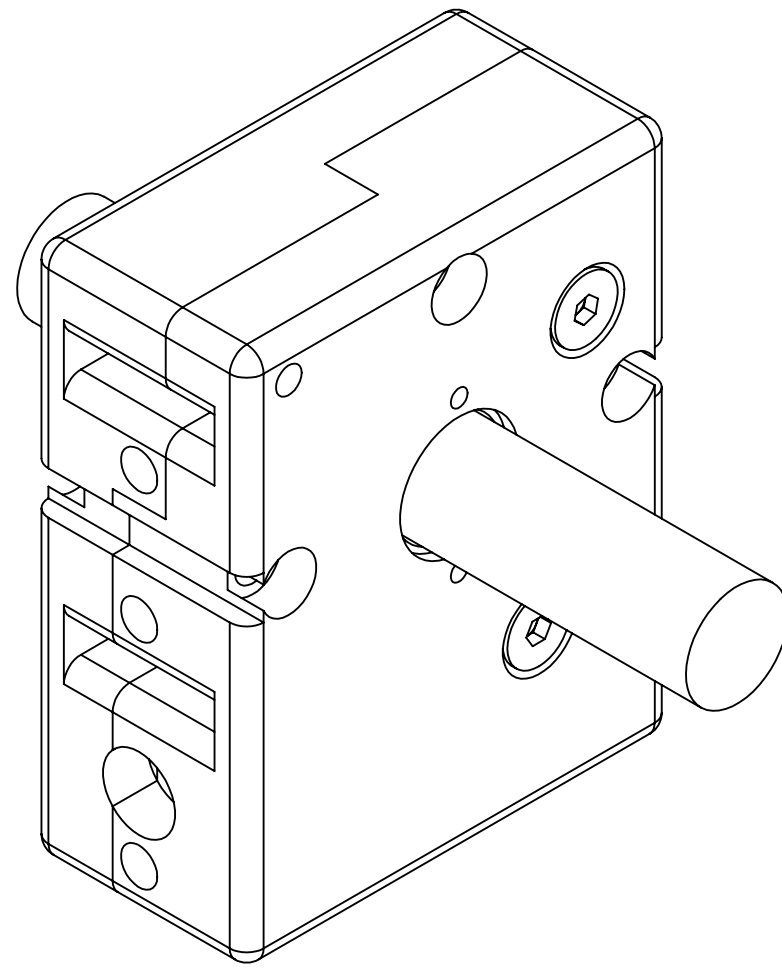


MASSES DO NOT
INCLUDE: CABLES FOR
CABLE TRACK OR GEARBOXES

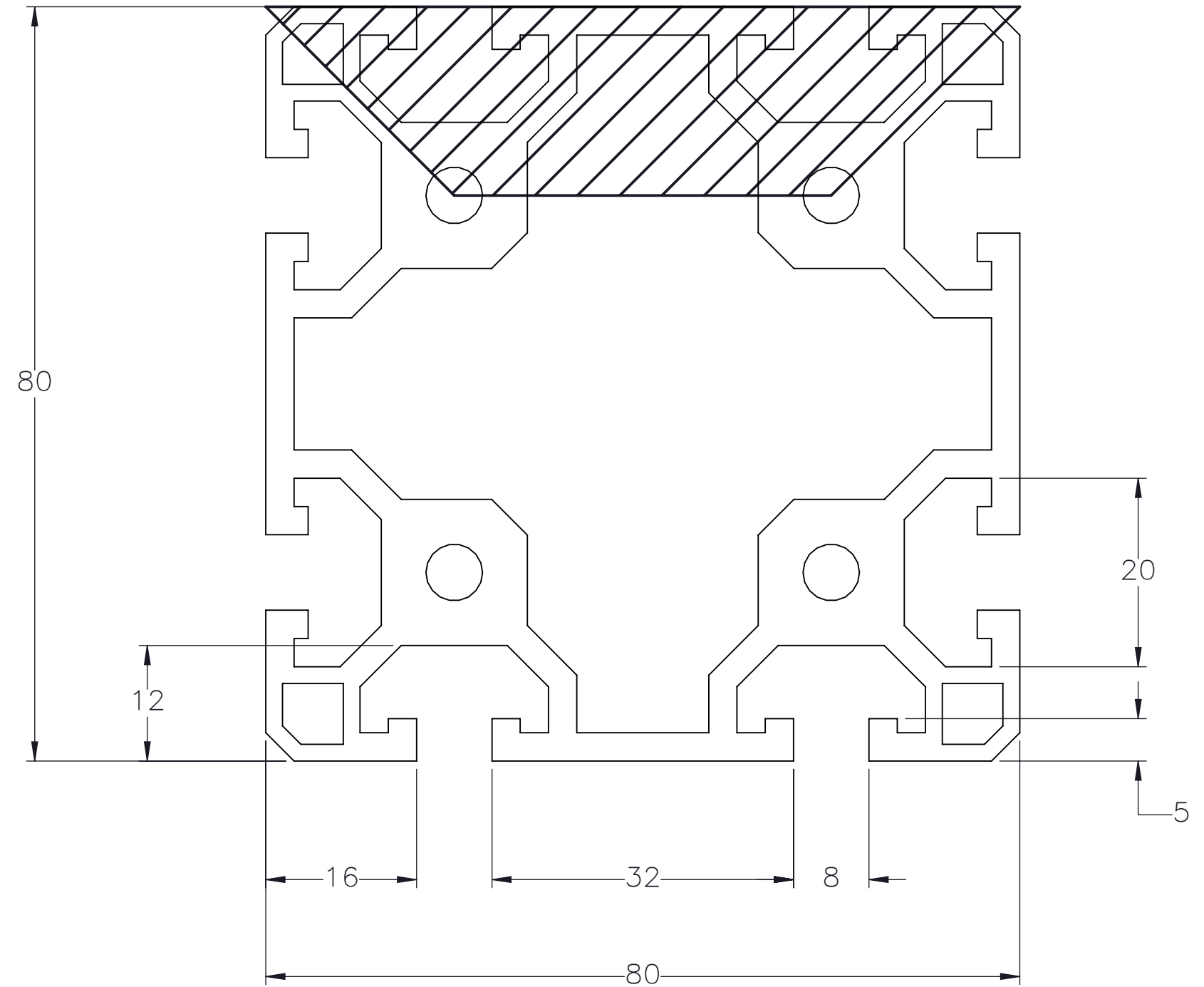


<p>MACRON DYNAMICS INC</p> <p>THIS DRAWING IS THE PROPERTY OF MACRON DYNAMICS. ANY REPRODUCTIONS SHALL BE FOR QUOTATION, MANUFACTURING, OR PURCHASING PURPOSES ONLY. RELEASE OF DRAWINGS TO OTHER CONCERNS DOES NOT CONSTITUTE LICENSING IN ANY WAY. INFORMATION CONTAINED HEREIN IS PROPRIETARY AND CONFIDENTIAL.</p> <p>SPECIFICATIONS ARE SUBJECT TO CHANGE WITHOUT NOTICE</p>	DRAWN BY: JA CHECKED BY: -- LAST SAVED BY: Tim	DATE: 2/25/2020 DATE: DD/MM/YYYY DATE: 12/29/2021	MATERIAL: FINISH:	TITLE: MACRON RTU SYSTEM	
	UNLESS OTHERWISE SPECIFIED, DIMENSIONS ARE IN INCHES. TOLERANCES UNLESS NOTED OTHERWISE: .X ± .03 .XX ± .010 .XXX ± .005 ANG ± 0°30'		SURFACE FINISH 63	SCALE 1:1 SHEET SIZE C	
	BREAK ALL SHARP EDGES DIMENSIONAL LIMITS APPLY AFTER FINISHING THIRD ANGLE PROJECTION		SHEET 2 OF 3	PART NUMBER MRA-RTU-0-00-XXX-XXXX	REV
	THIS DRAWING IS THE PROPERTY OF MACRON DYNAMICS. ANY REPRODUCTIONS SHALL BE FOR QUOTATION, MANUFACTURING, OR PURCHASING PURPOSES ONLY. RELEASE OF DRAWINGS TO OTHER CONCERNS DOES NOT CONSTITUTE LICENSING IN ANY WAY. INFORMATION CONTAINED HEREIN IS PROPRIETARY AND CONFIDENTIAL.				

SHAFTED PULLEY



ACTUATOR BODY MOUNTING FEATURES T-NUT SLOTS



MACRON DYNAMICS INC

THIS DRAWING IS THE PROPERTY OF MACRON DYNAMICS. ANY REPRODUCTIONS SHALL BE FOR QUOTATION, MANUFACTURING, OR PURCHASING PURPOSES ONLY. RELEASE OF DRAWINGS TO OTHER CONCERNS DOES NOT CONSTITUTE LICENSING IN ANY WAY. INFORMATION CONTAINED HEREIN IS PROPRIETARY AND CONFIDENTIAL.

SPECIFICATIONS ARE SUBJECT TO CHANGE WITHOUT NOTICE

DRAWN BY: PHW	DATE: 11/26/2017	MATERIAL:	TITLE:
CHECKED BY: --	DATE: DD/MM/YYYY	FINISH: N/A	SCALE 1:1 SHEET SIZE C
LAST SAVED BY: Tim	DATE: 12/29/2021		
UNLESS OTHERWISE SPECIFIED, DIMENSIONS ARE IN INCHES. TOLERANCES UNLESS NOTED OTHERWISE:		SHEET 3 OF 3	PART NUMBER MRA-RTU-0
SURFACE FINISH $\sqrt{\text{V}}$			
BREAK ALL SHARP EDGES DIMENSIONAL LIMITS APPLY AFTER FINISHING		REV 00	
THIRD ANGLE PROJECTION			

MRA-RTU-1-00- -

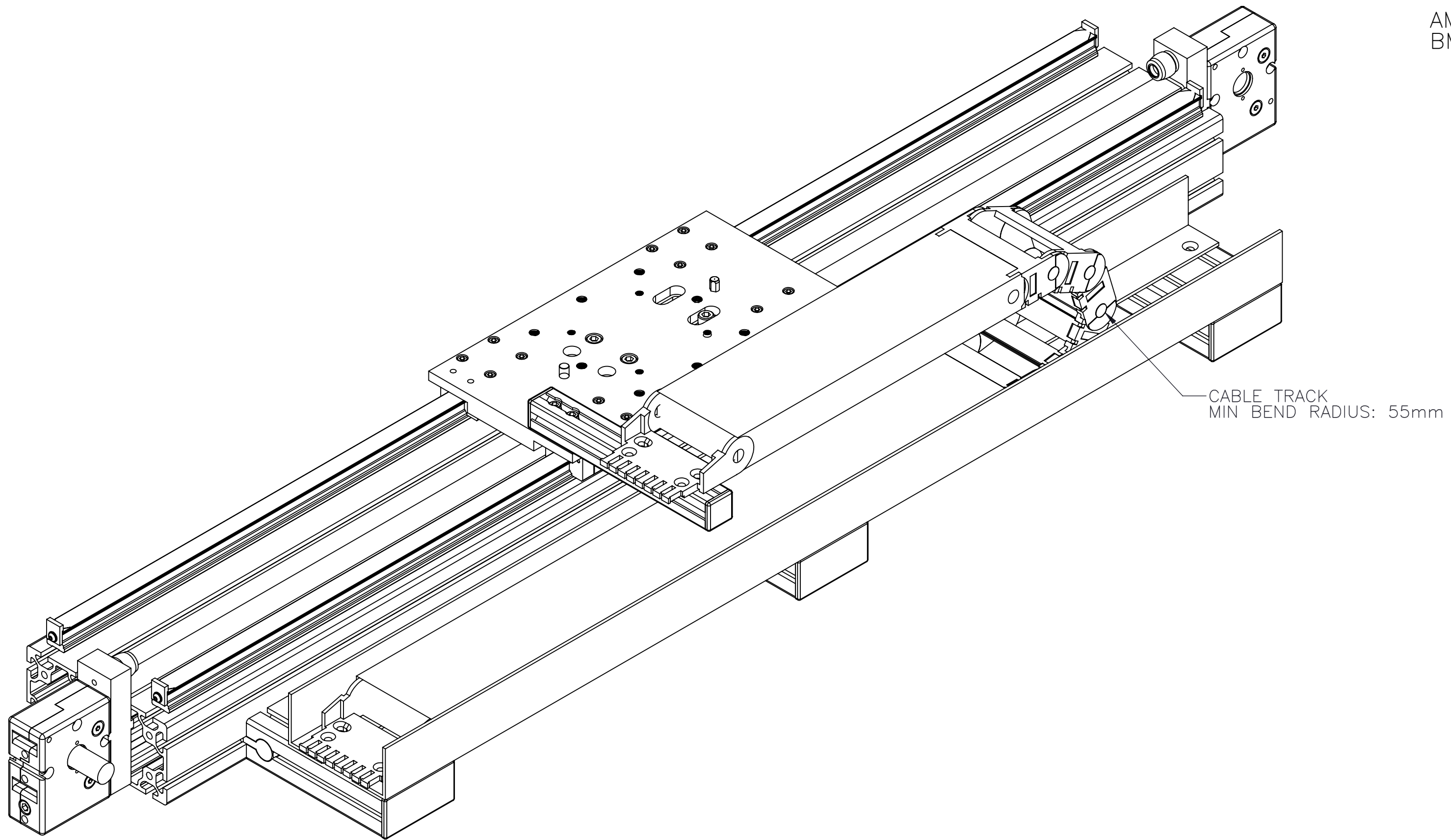
ENTER
TRAVEL IN INCREMENTS OF 25mm
TRAVEL LIMITS: 250mm-5575mm*

SELECT
DRIVE SHAFT LOCATION, SEE PAGE 2

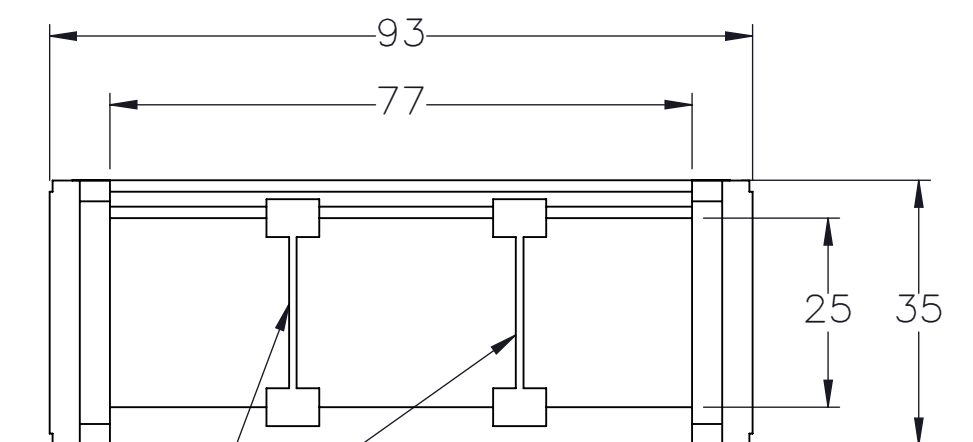
SHAFTING TYPE
A0=SINGLE SHAFTED
B0=DOUBLE SHAFTED

AM=SINGLE SHAFTED W/ MOTOR MOUNT
BM=DOUBLE SHAFTED W/ MOTOR MOUNT

*IF TRAVEL IS
OUTSIDE LIMITS
LISTED, CONTACT
MACRON*



CABLE TRACK CROSS SECTION




(2x) SEPARATORS
(EVERY OTHER LINK)

APPROVED: _____
SIGN & PRINT

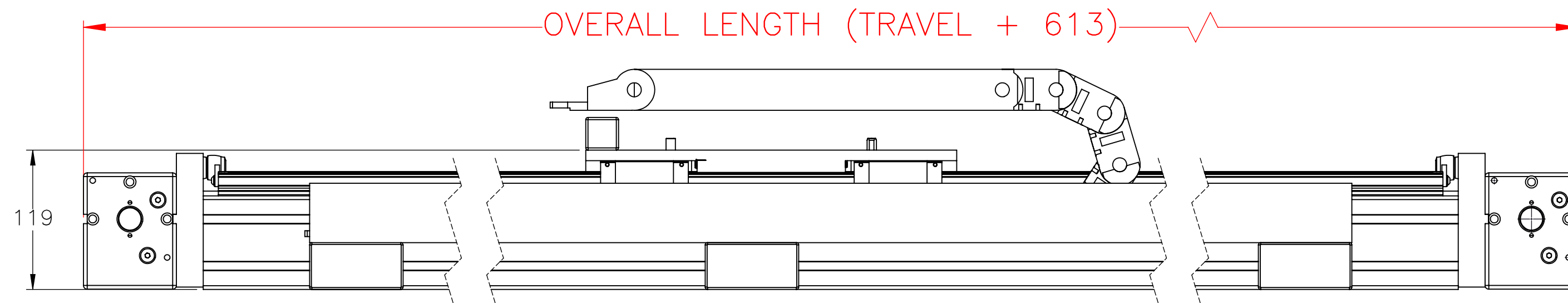
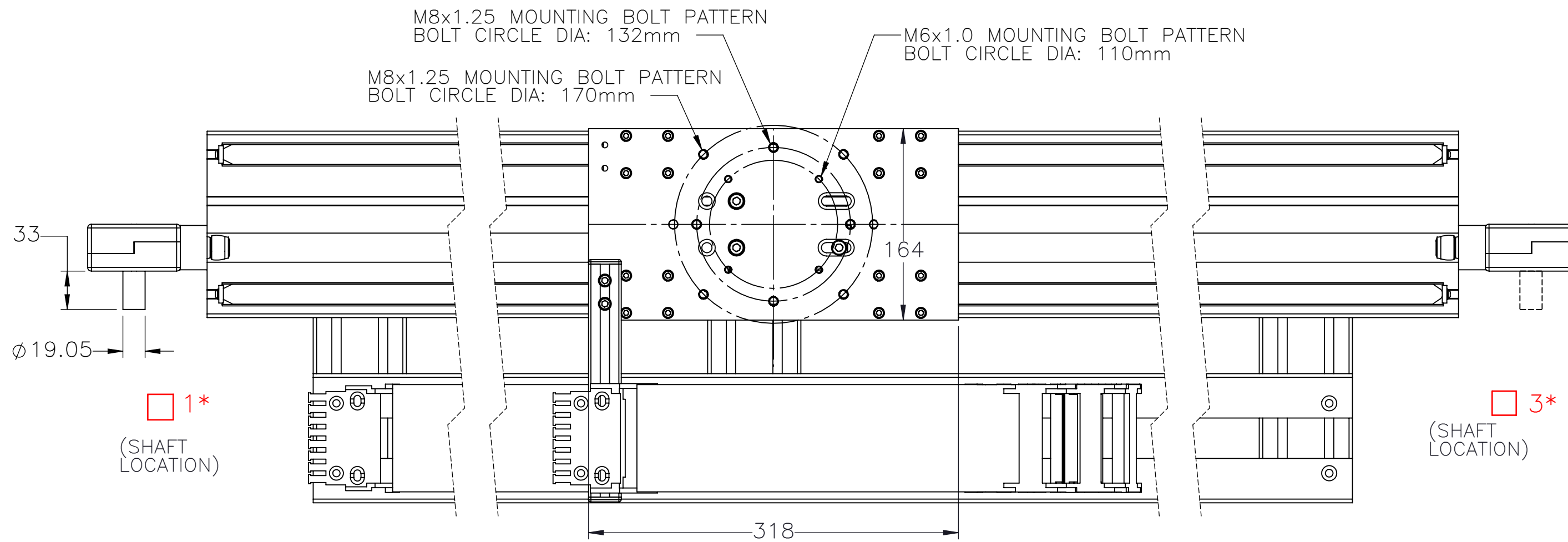
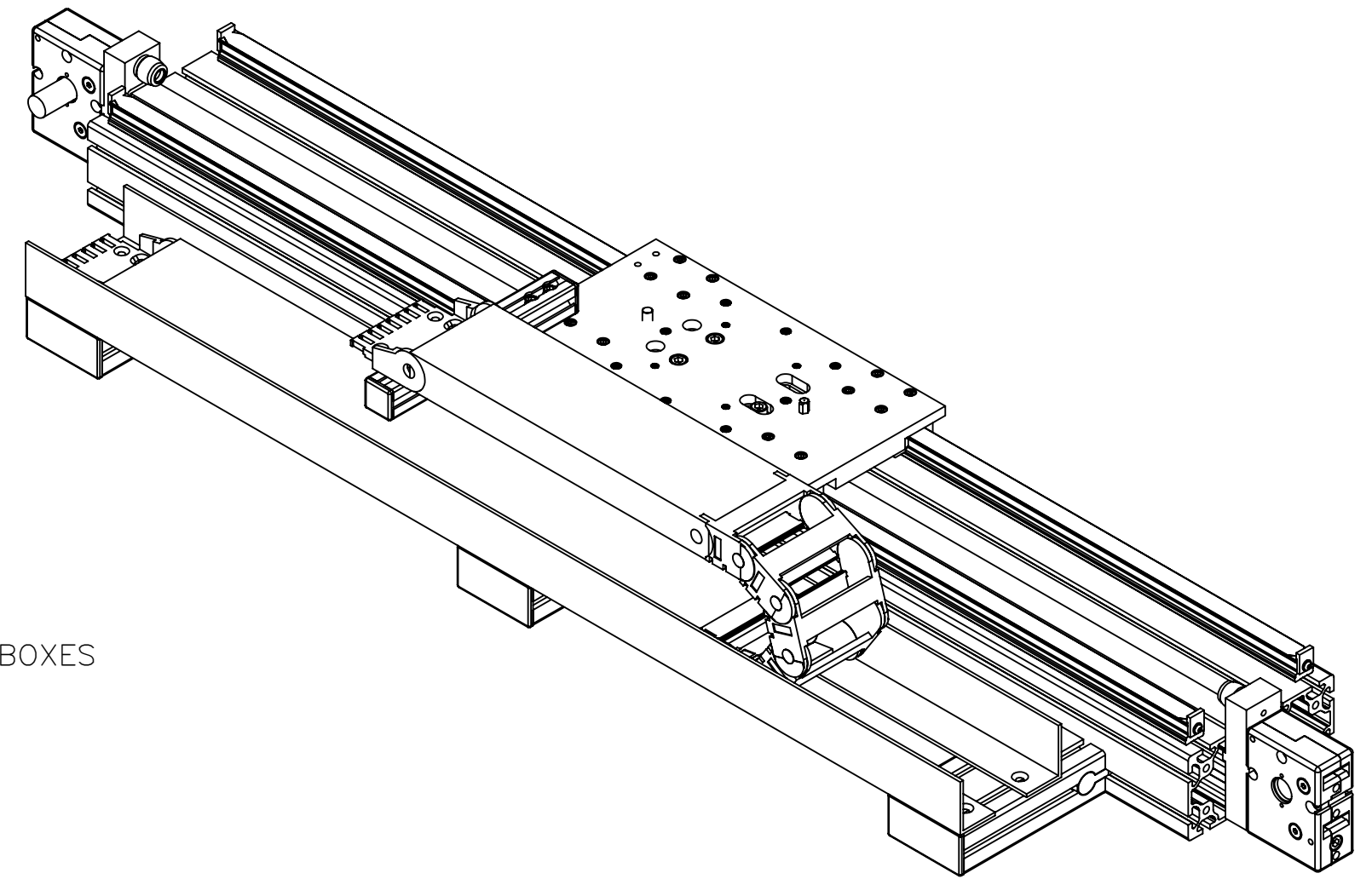
DATE: _____


PO:REFERENCE#: _____

 MACRON DYNAMICS INC	DRAWN BY: TH DATE: 3/6/2012	MATERIAL:	TITLE: MACRON RTU SYSTEM
	CHECKED BY: -- DATE: DD/MM/YYYY	FINISH:	
	LAST SAVED BY: Tim DATE: 12/21/2021	UNLESS OTHERWISE SPECIFIED, DIMENSIONS ARE IN MILLIMETER. TOLERANCES UNLESS NOTED OTHERWISE:	
	SURFACE FINISH: 63 ✓	.X ± .762 .XX ± .254 .XXX ± .127 ANG ± 0°30'	
THIS DRAWING IS THE PROPERTY OF MACRON DYNAMICS. ANY REPRODUCTIONS SHALL BE FOR QUOTATION, MANUFACTURING, OR PURCHASING PURPOSES ONLY. RELEASE OF DRAWINGS TO OTHER CONCERNS DOES NOT CONSTITUTE LICENSING IN ANY WAY. INFORMATION CONTAINED HEREIN IS PROPRIETARY AND CONFIDENTIAL.	BREAK ALL SHARP EDGES DIMENSIONAL LIMITS APPLY AFTER FINISHING THIRD ANGLE PROJECTION	SCALE: 1:1 SHEET SIZE: C	SHEET: 1 OF 3 PART NUMBER: MRA-RTU-1-00-XXX-XXXXX REV: C

PROPERTY	BASE VALUE (T=250mm)
MOVING MASS	4.75kg(+0.0253kg/25mm)
BELT MASS	0.274kg(+0.00313kg/25mm)
PULLEY PITCH DIAMETER	47.75mm (1.880")
PULLEY WIDTH	28.9mm (1.138")
PULLEY MATERIAL	STEEL
BELT WEIGHT (kg)	$((\text{TRAVEL IN METERS} \times 2) + 1.2) \times 0.12$
TRAVEL PER REV.	150mm
TRAVEL MIN.	150mm
TRAVEL MAX.	5650mm
CART WEIGHT (kg)	3.8
SYSTEM WEIGHT (kg)	$((\text{TRAVEL IN METERS}) \times 26.5) + 16.5$

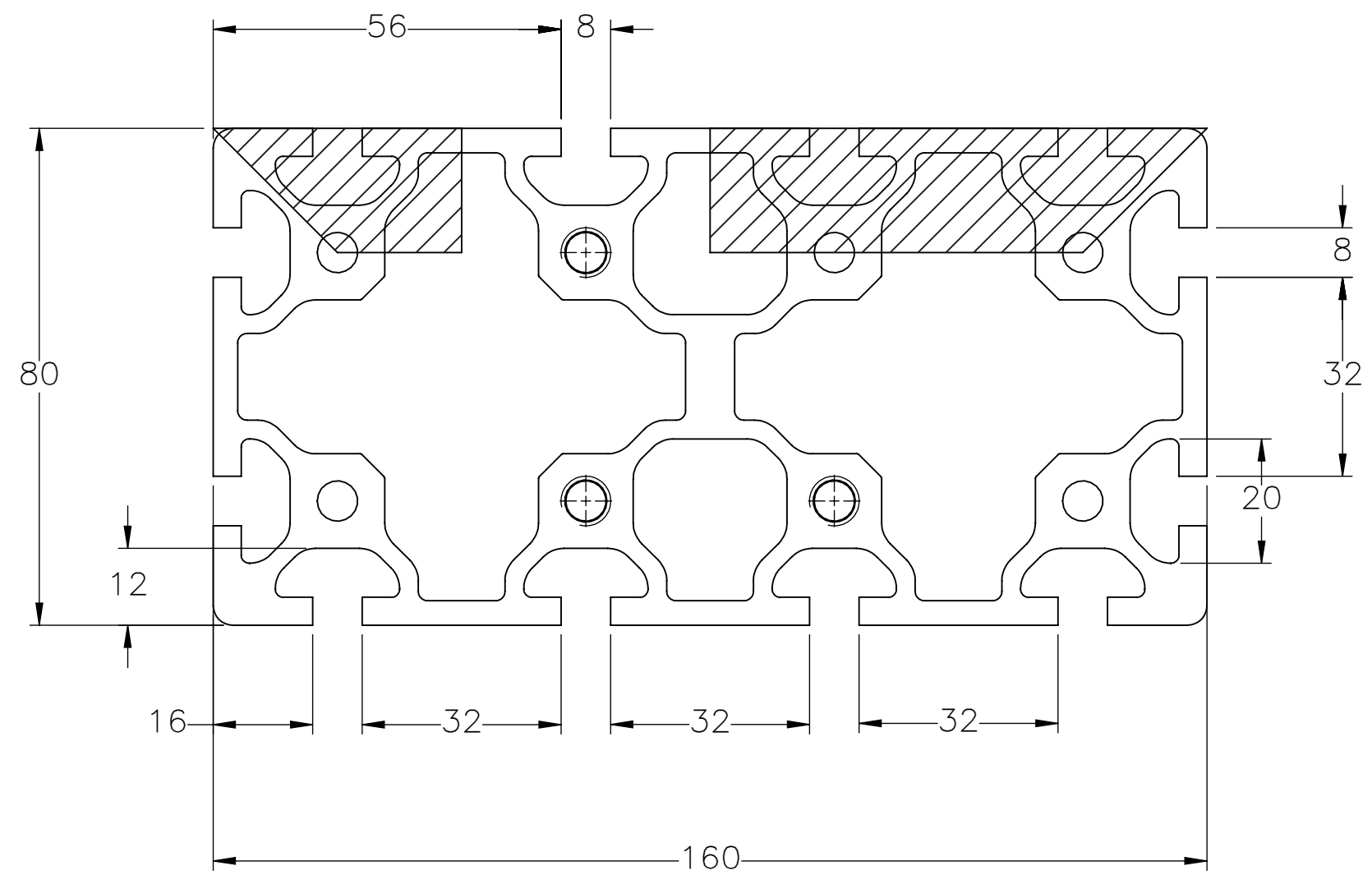
MASSES DO NOT INCLUDE: CABLES FOR CABLE TRACK OR GEARBOXES



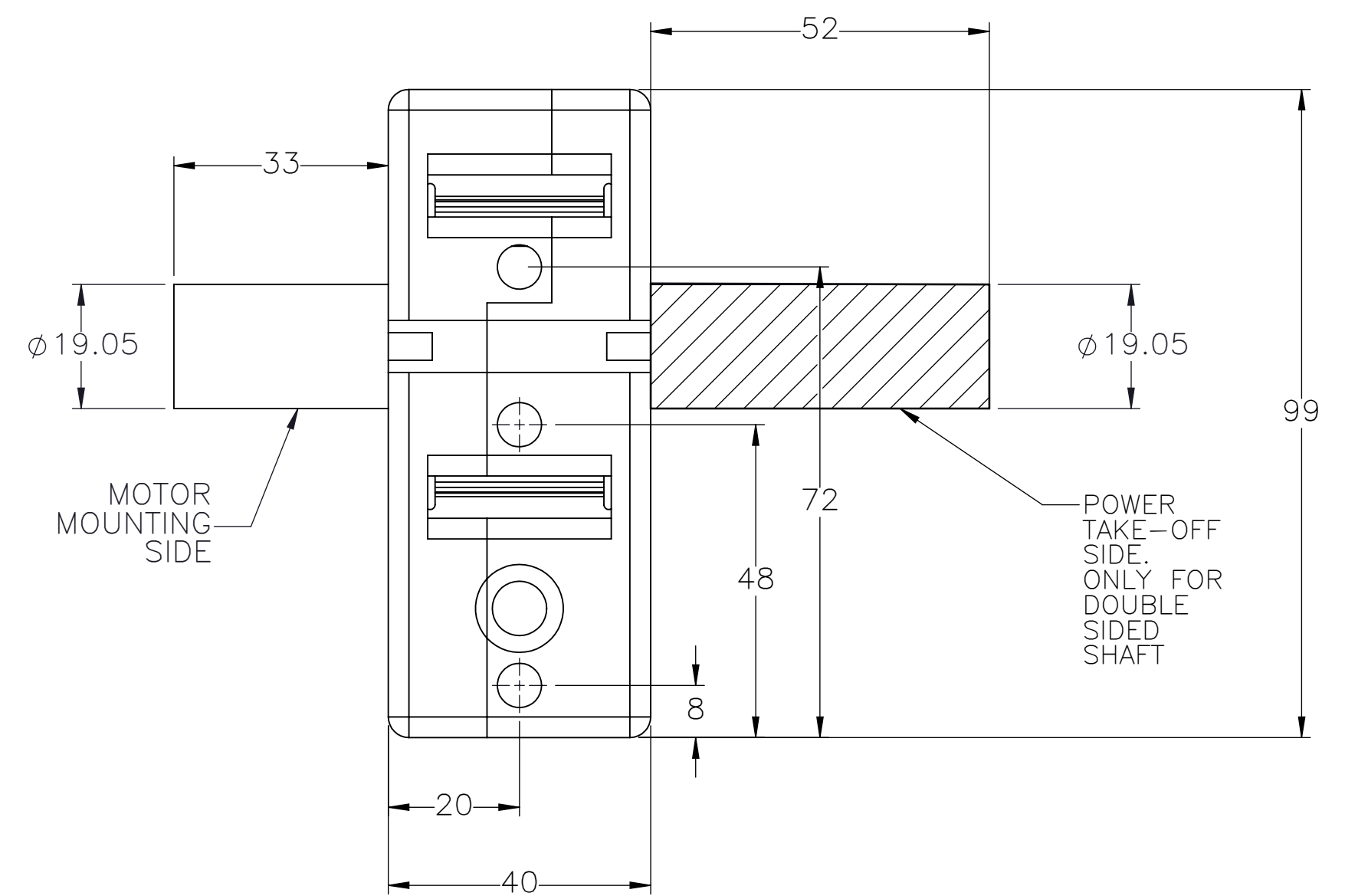
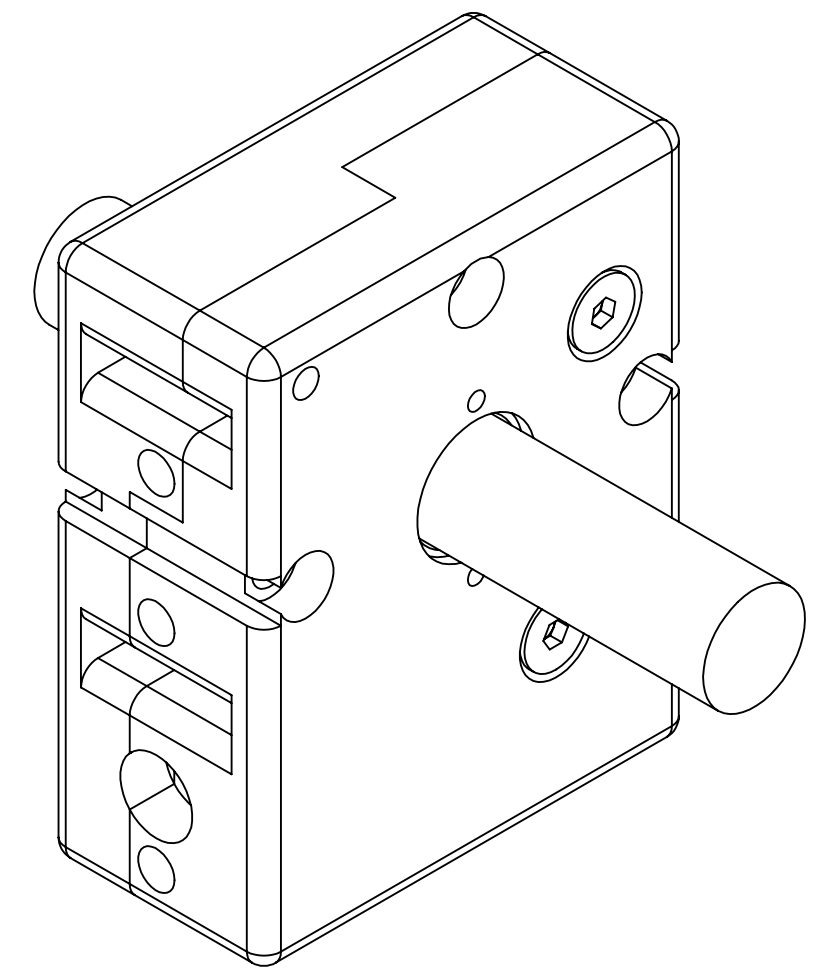
 MACRON DYNAMICS INC	DRAWN BY: PHW CHECKED BY: -- LAST SAVED BY: Tim	DATE: 3/6/2012 DATE: DD/MM/YYYY DATE: 12/21/2021	MATERIAL:	TITLE: MACRON RTU SYSTEM
	UNLESS OTHERWISE SPECIFIED, DIMENSIONS ARE IN MILLIMETERS. TOLERANCES UNLESS NOTED OTHERWISE:		FINISH:	SCALE 1:1 SHEET SIZE C
	SURFACE FINISH \checkmark		SHEET 2 OF 3	PART NUMBER MRA-RTU-1-00-XXX-XXXXX
	THIS DRAWING IS THE PROPERTY OF MACRON DYNAMICS. ANY REPRODUCTIONS SHALL BE FOR QUOTATION, MANUFACTURING, OR PURCHASING PURPOSES ONLY. RELEASE OF DRAWINGS TO OTHER CONCERNS DOES NOT CONSTITUTE LICENSING IN ANY WAY. INFORMATION CONTAINED HEREIN IS PROPRIETARY AND CONFIDENTIAL.		BREAK ALL SHARP EDGES DIMENSIONAL LIMITS APPLY AFTER FINISHING THIRD ANGLE PROJECTION	REV

SPECIFICATIONS ARE SUBJECT TO CHANGE WITHOUT NOTICE

ACTUATOR BODY MOUNTING FEATURES T-NUT SLOTS



SHAFTED PULLEY



MACRON DYNAMICS INC

THIS DRAWING IS THE PROPERTY OF MACRON DYNAMICS. ANY REPRODUCTIONS SHALL BE FOR QUOTATION, MANUFACTURING, OR PURCHASING PURPOSES ONLY. RELEASE OF DRAWINGS TO OTHER CONCERNS DOES NOT CONSTITUTE LICENSING IN ANY WAY. INFORMATION CONTAINED HEREIN IS PROPRIETARY AND CONFIDENTIAL.

SPECIFICATIONS ARE SUBJECT TO CHANGE WITHOUT NOTICE

DRAWN BY: PHW DATE: 3/6/2012
CHECKED BY: -- DATE: DD/MM/YYYY
LAST SAVED BY: Tim DATE: 12/21/2021

UNLESS OTHERWISE SPECIFIED, DIMENSIONS ARE IN MILLIMETERS. TOLERANCES UNLESS NOTED OTHERWISE:
.X ± .762
.XX ± .254
.XXX ± .127
ANG ± 0°30'

SURFACE FINISH $\sqrt{\text{V}}$
BREAK ALL SHARP EDGES
DIMENSIONAL LIMITS APPLY AFTER FINISHING
THIRD ANGLE PROJECTION

MATERIAL:
FINISH:

SHEET 3 OF 3

PART NUMBER MRA-RTU-1-00-XXX-XXXXX

TITLE: MACRON RTU SYSTEM

SCALE 1:1 SHEET SIZE C REV

MRA-RTU-2-00-000-

ENTER X-AXIS TRAVEL
TRAVEL IN INCREMENTS OF 250mm
TRAVEL LIMITS: 250mm-5325mm*

*IF TRAVEL IS
OUTSIDE LIMITS
LISTED, CONTACT
MACRON*

GEARBOX MODEL

VC-T-090-____

RATIO: _____

MOTOR INFORMATION

MANUFACTURER: _____

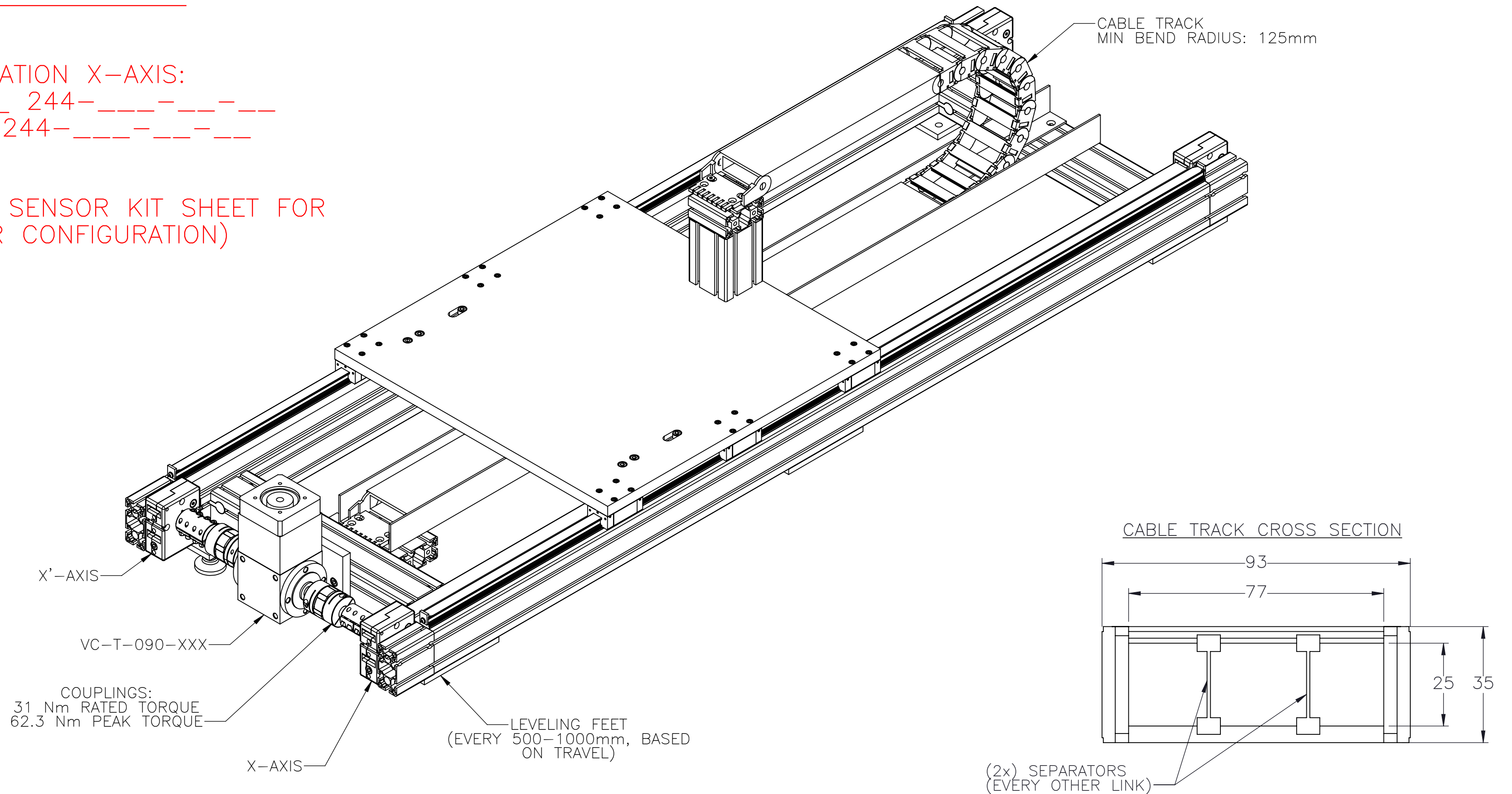
MODEL: _____

SENSOR INFORMATION X-AXIS:

HOME-QTY ____ 244-____-____-____

EOT-QTY ____ 244-____-____-____


(SEE T-SLOT SENSOR KIT SHEET FOR
PART NUMBER CONFIGURATION)

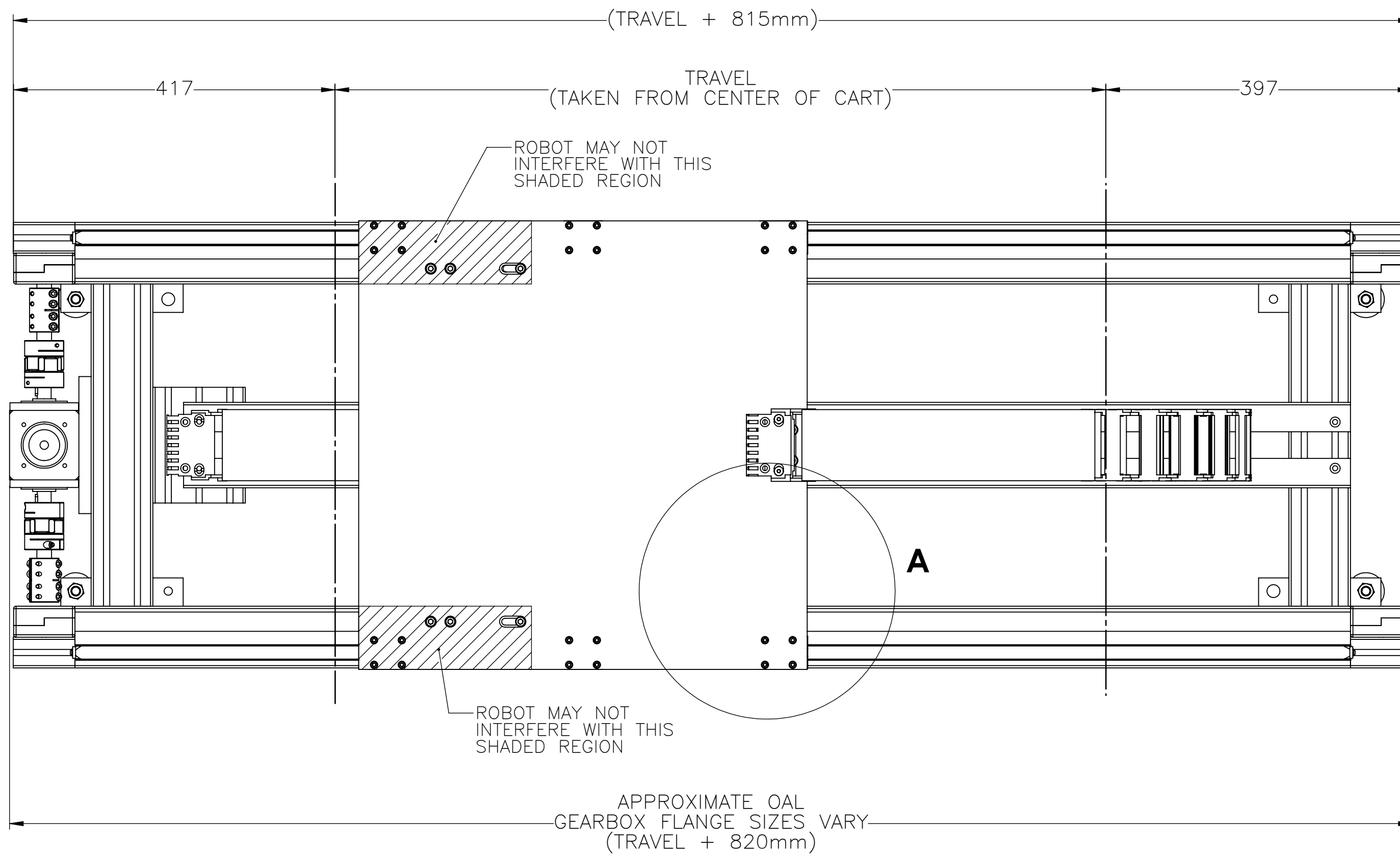


APPROVED: _____

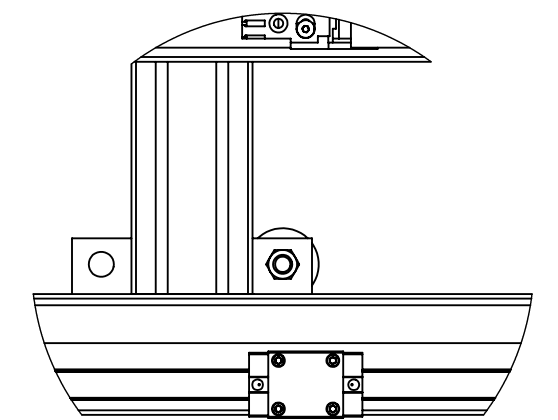
DATE: _____

PO:REFERENCE#: _____

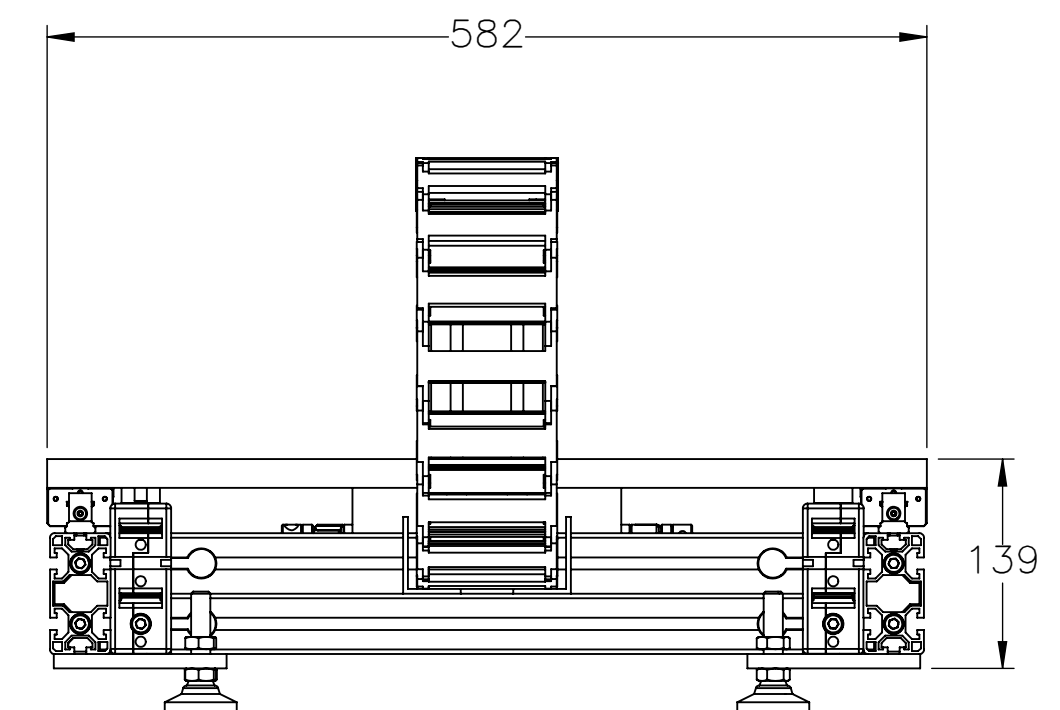
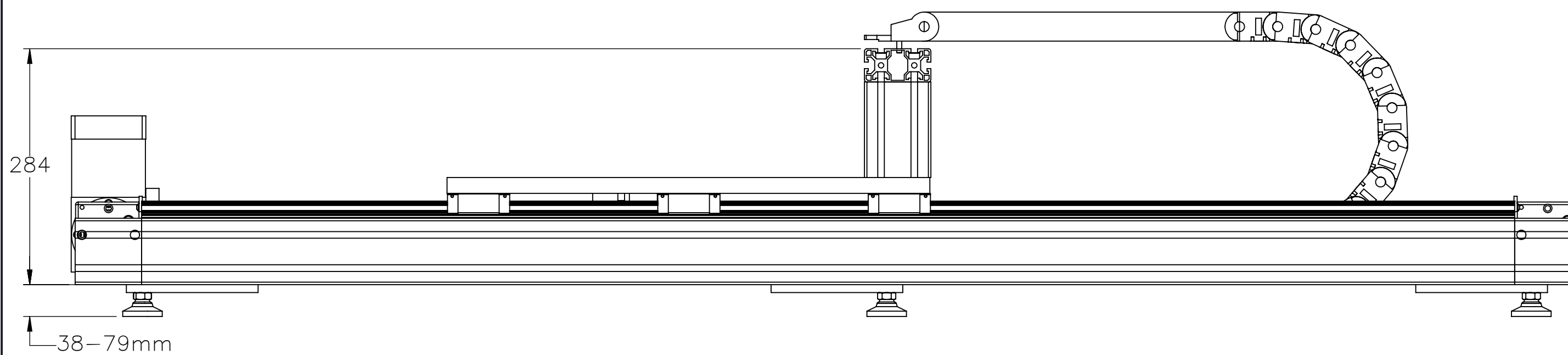
 MACRON DYNAMICS INC	DRAWN BY: JA DATE: 2/27/2020	MATERIAL:	TITLE: MACRON RTU SYSTEM
	CHECKED BY: -- DATE: DD/MM/YYYY	FINISH:	
	LAST SAVED BY: Tim DATE: 12/21/2021	UNLESS OTHERWISE SPECIFIED, DIMENSIONS ARE IN MILLIMETERS. TOLERANCES UNLESS NOTED OTHERWISE:	SCALE 1:1 SHEET SIZE C
	SURFACE FINISH \checkmark	BREAK ALL SHARP EDGES DIMENSIONAL LIMITS APPLY AFTER FINISHING THIRD ANGLE PROJECTION	SHEET 1 OF 5 PART NUMBER MRA-RTU-2-00-000-XXXXX




ROBOT TRANSPORT PLATE HIDDEN TO SHOW CROSSBEAM UNDERNEATH. CROSSBEAMS AND LEVELING FEET ARE PLACED EVERY 500-1000mm DEPENDING ON OVERALL LENGTH OF SYSTEM.



DETAIL A



 MACRON DYNAMICS INC	DRAWN BY: JA CHECKED BY: -- LAST SAVED BY: Tim	DATE: 2/27/2020 DATE: DD/MM/YYYY DATE: 12/21/2021	MATERIAL: FINISH:	TITLE: MACRON RTU SYSTEM	
	<small>UNLESS OTHERWISE SPECIFIED, DIMENSIONS ARE IN INCHES. TOLERANCES UNLESS NOTED OTHERWISE:</small>		FINISH:	SCALE 1:1 SHEET SIZE C	
	SURFACE FINISH 63		SHEET 2 OF 5	PART NUMBER MRA-RTU-2-00-000-XXXXX	REV
	<small>THIS DRAWING IS THE PROPERTY OF MACRON DYNAMICS. ANY REPRODUCTIONS SHALL BE FOR QUOTATION, MANUFACTURING, OR PURCHASING PURPOSES ONLY. RELEASE OF DRAWINGS TO OTHER CONCERNS DOES NOT CONSTITUTE LICENSING IN ANY WAY. INFORMATION CONTAINED HEREIN IS PROPRIETARY AND CONFIDENTIAL.</small>		BREAK ALL SHARP EDGES DIMENSIONAL LIMITS APPLY AFTER FINISHING THIRD ANGLE PROJECTION		

GANTRY MOUNTING FEATURES

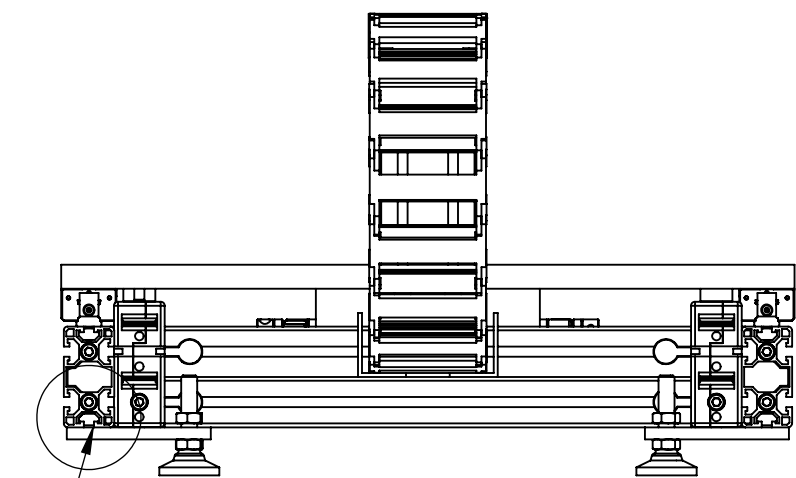
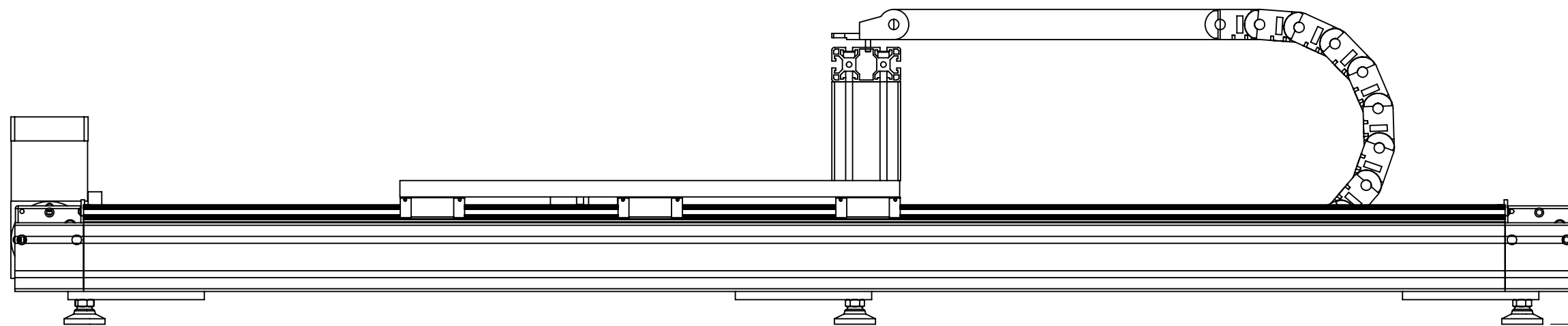
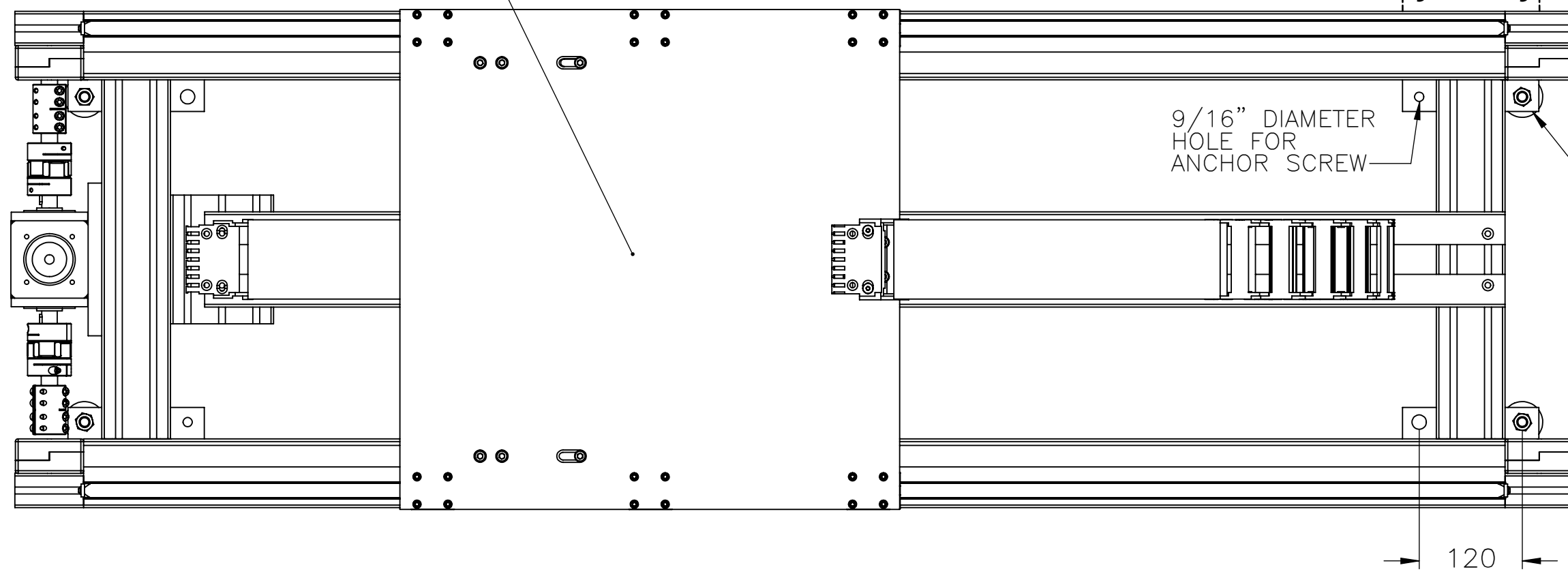
ROBOT MOUNTING BOLT PATTERN WILL BE PUT IN PLATE WHEN CUSTOMER PROVIDES A BOLT PATTERN

MOUNTING PLATE CAN BE REVERSED TO OUTSIDE OF ASSEMBLY AS WELL

9/16" DIAMETER HOLE FOR ANCHOR SCREW

- MOUNTING PLATES (PRIMARY MOUNTING OPTION)
- 1x LEVELING FOOT PER PLATE (PROVIDED BY MACRON)
 - 1x 9/16" DIAMETER THROUGH HOLE PER PLATE FOR ANCHOR SCREW (ANCHOR SCREW NOT PROVIDED BY MACRON)

- MOUNTING PLATES SHOULD BE USED AS PRIMARY MOUNTING
- T-SLOTS AVAILABLE SHOULD BE USED TO MOUNT ACCESSORIES ONTO GANTRY

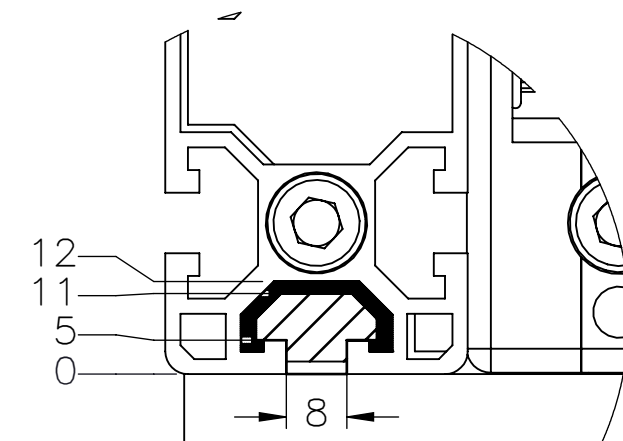
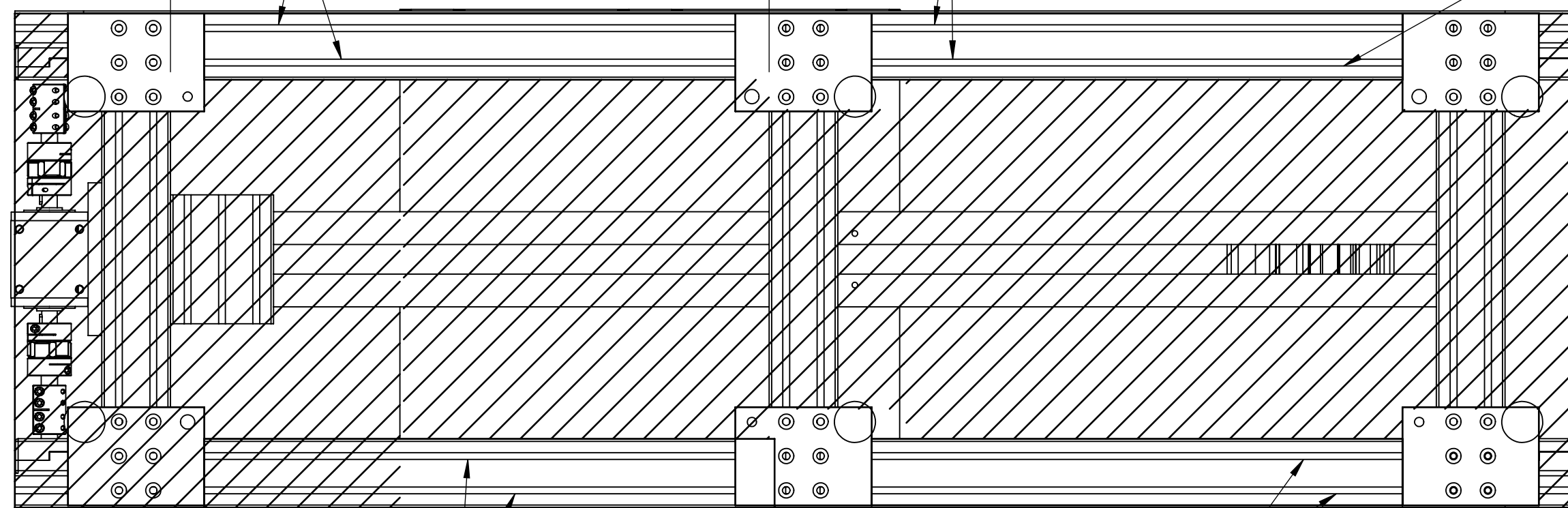


CROSSBEAMS PLACED EVERY 500-1000mm

2 T-SLOTS OPEN FOR MOUNTING (SECONDARY MOUNTING OPTION)

2 T-SLOTS OPEN FOR MOUNTING (SECONDARY MOUNTING OPTION)


T-SLOTS ON BOTTOM OF GANTRY AVAILABLE



DETAIL A
VIEW OF TYPICAL T-SLOT (HEAVY SHADING)
VIEW OF TYPICAL T-NUT (LIGHT SHADING)

2 T-SLOTS OPEN FOR MOUNTING (SECONDARY MOUNTING OPTION)

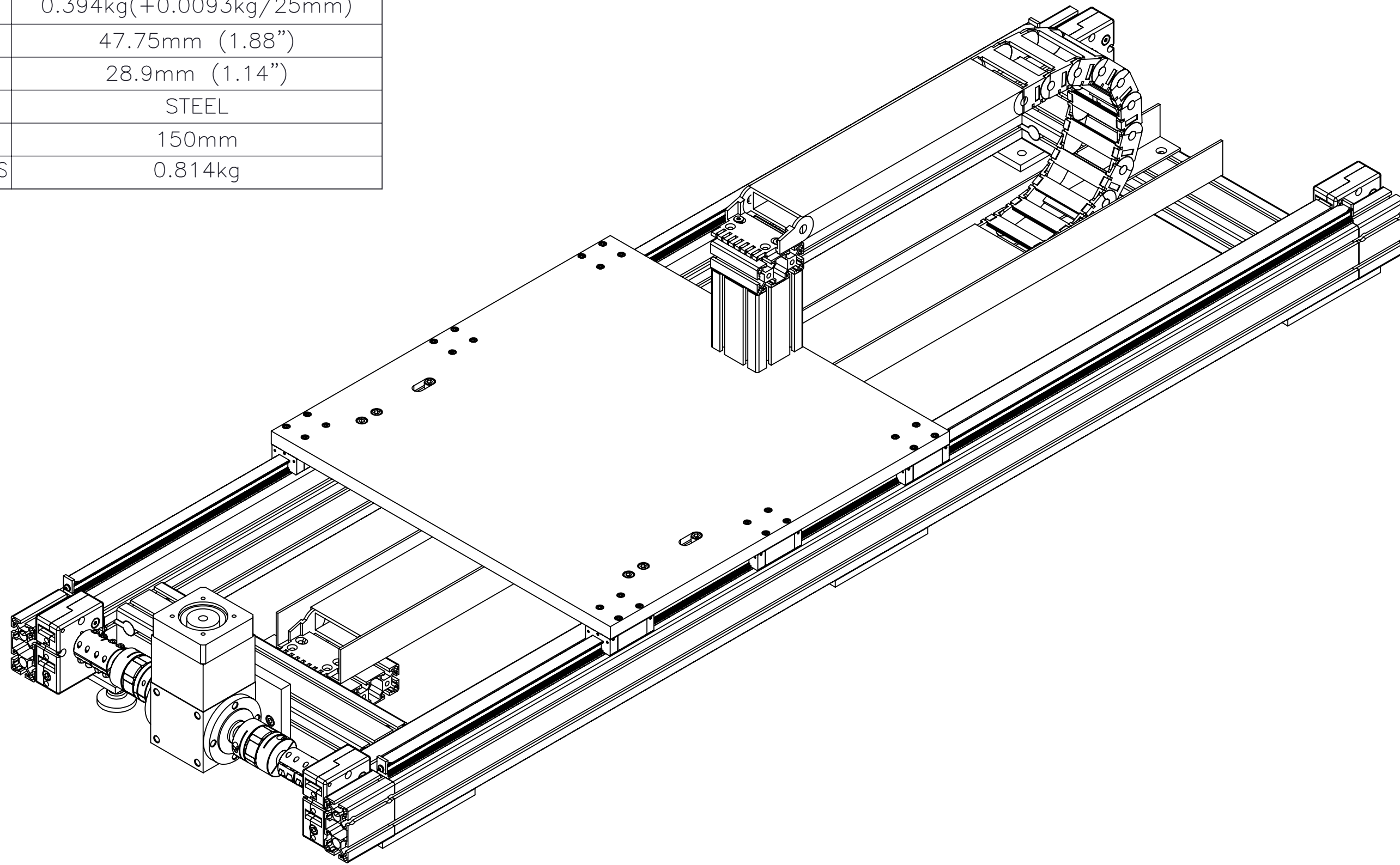
2 T-SLOTS OPEN FOR MOUNTING (SECONDARY MOUNTING OPTION)


 MACRON DYNAMICS INC	DRAWN BY: JA CHECKED BY: -- LAST SAVED BY: Tim	DATE: 2/27/2020 DATE: DD/MM/YYYY DATE: 12/21/2021	MATERIAL:	TITLE: MACRON RTU SYSTEM	
	UNLESS OTHERWISE SPECIFIED, DIMENSIONS ARE IN INCHES. TOLERANCES UNLESS NOTED OTHERWISE:		FINISH:	SCALE 1:1 SHEET SIZE C	
	SURFACE FINISH 63		SHEET 3 OF 5	PART NUMBER MRA-RTU-2-00-000-XXXXX	REV
	THIS DRAWING IS THE PROPERTY OF MACRON DYNAMICS. ANY REPRODUCTIONS SHALL BE FOR QUOTATION, MANUFACTURING, OR PURCHASING PURPOSES ONLY. RELEASE OF DRAWINGS TO OTHER CONCERNS DOES NOT CONSTITUTE LICENSING IN ANY WAY. INFORMATION CONTAINED HEREIN IS PROPRIETARY AND CONFIDENTIAL.		BREAK ALL SHARP EDGES DIMENSIONAL LIMITS APPLY AFTER FINISHING THIRD ANGLE PROJECTION		

MOTOR SIZING INFORMATION

(INCREMENTAL ADDERS REFER TO MASS PER TRAVEL LENGTH)

PROPERTY	BASE VALUE (T=250mm)
MOVING MASS	54.02kg(+0.0253kg/25mm)
BELT MASS	0.394kg(+0.0093kg/25mm)
PULLEY PITCH ϕ	47.75mm (1.88")
PULLEY WIDTH	28.9mm (1.14")
PULLEY MATERIAL	STEEL
TRAVEL PER REV	150mm
CONN SHAFT MATERIAL MASS	0.814kg



X-AXIS	MOVING MASS	(TRAVEL x 0.001) + 53.77 = kg			
	BELT MASS	[(2 x TRAVEL) x .000186] + 0.301 = kg			
 MACRON DYNAMICS INC		DRAWN BY: JA	DATE: 2/27/2020	MATERIAL:	
		CHECKED BY: --	DATE: DD/MM/YYYY	TITLE: MACRON RTU SYSTEM	
		LAST SAVED BY: Tim	DATE: 12/21/2021	FINISH:	
		UNLESS OTHERWISE SPECIFIED, DIMENSIONS ARE IN INCHES. TOLERANCES UNLESS NOTED OTHERWISE:		.X ± .03 .XX ± .010 .XXX ± .005 ANG ± 0°30'	
		SURFACE FINISH 63		SCALE 1:1 SHEET SIZE C	
THIS DRAWING IS THE PROPERTY OF MACRON DYNAMICS. ANY REPRODUCTIONS SHALL BE FOR QUOTATION, MANUFACTURING, OR PURCHASING PURPOSES ONLY. RELEASE OF DRAWINGS TO OTHER CONCERNS DOES NOT CONSTITUTE LICENSING IN ANY WAY. INFORMATION CONTAINED HEREIN IS PROPRIETARY AND CONFIDENTIAL		BREAK ALL SHARP EDGES DIMENSIONAL LIMITS APPLY AFTER FINISHING THIRD ANGLE PROJECTION		SHEET 4 OF 5	PART NUMBER MRA-RTU-2-00-000-XXXXX REV

SPECIFICATIONS

Sensor Type	Inductive
Sensor Size	Fits all 8mm wide T-Slots
Operating Voltage	10–30 VDC
Voltage Drop Across Conducting Sensor	≤1.8 V at 100 mA
Number of Conductors (AWG)	3x26 AWG
Temperature Range	-40°C to 105°C

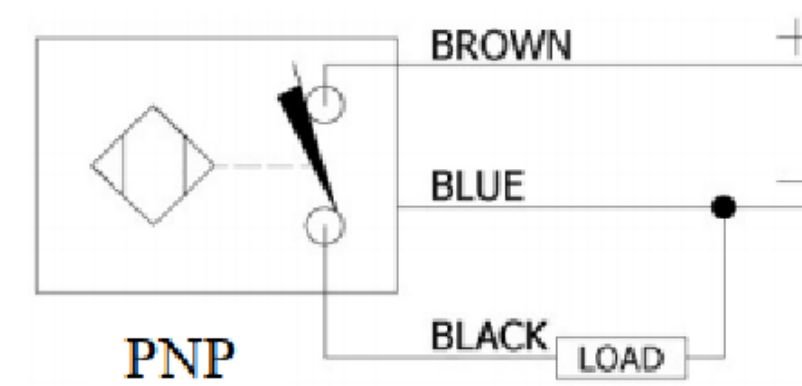
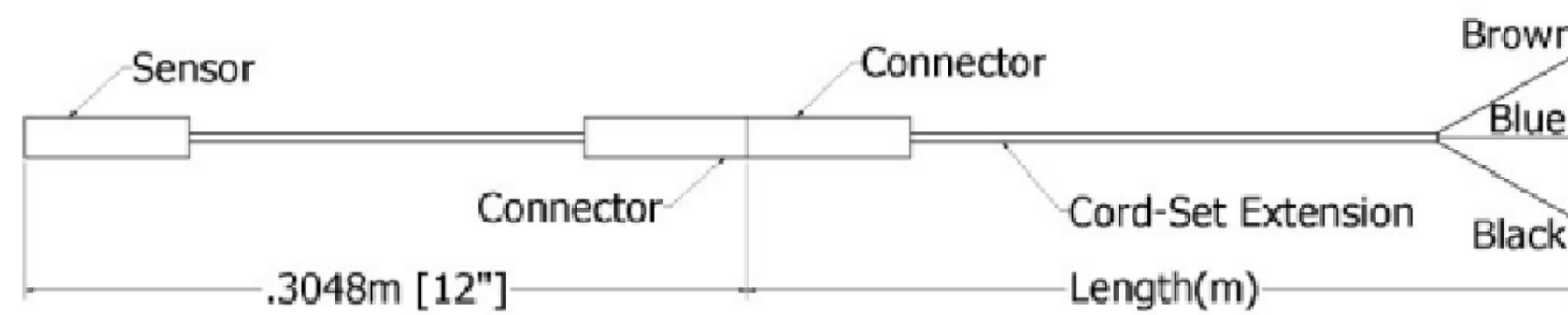
Part Number Configuration

244-____-____-____

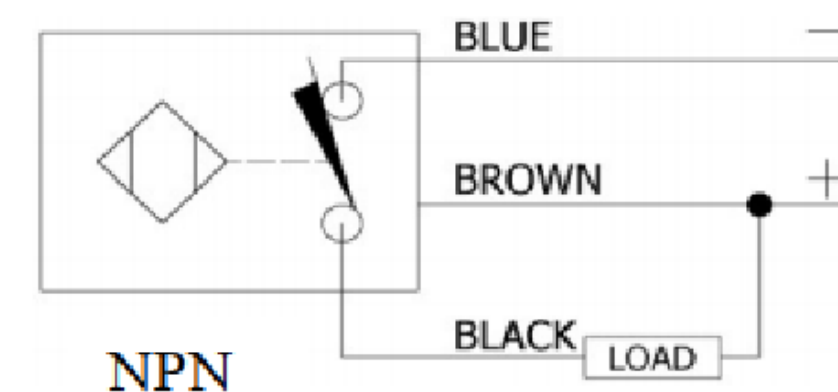
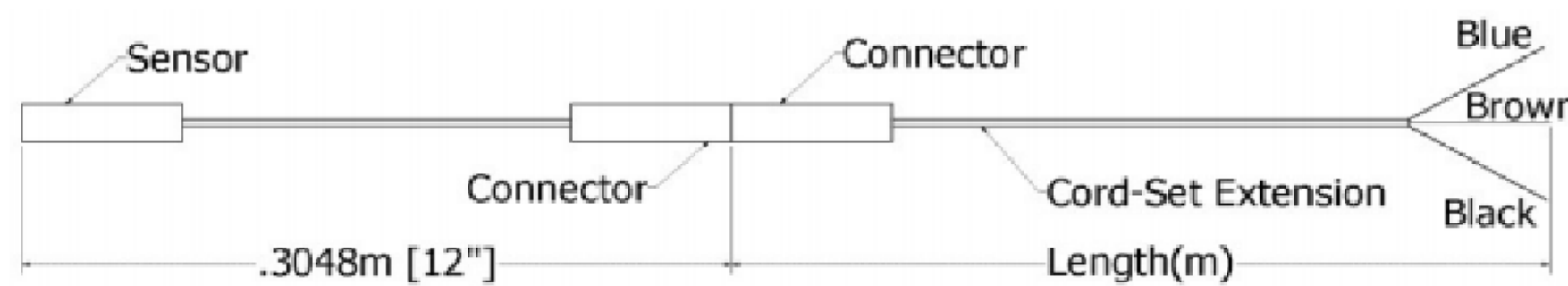
PNP or NPN	NC or NO	02	Meters
PNP or NPN	NC or NO	06	Meters
PNP or NPN	NC or NO	12	Meters

Example: PNP, normally closed, cord-set extension length 6 meters = 244-PNP-NC-06

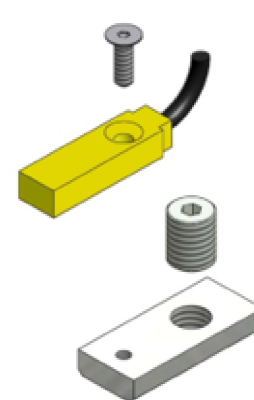
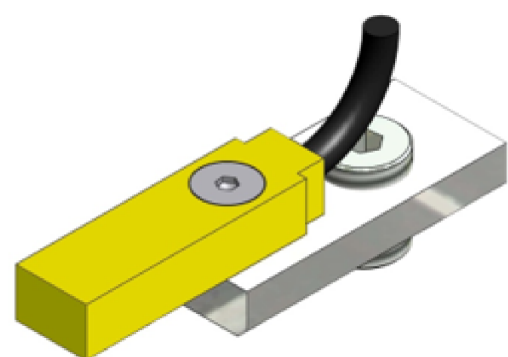
PNP Diagrams



NPN Diagrams

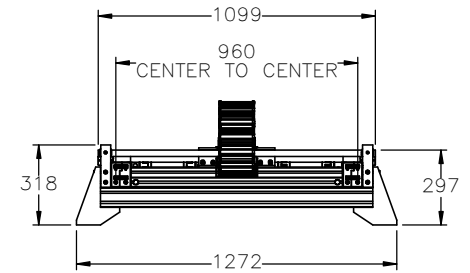
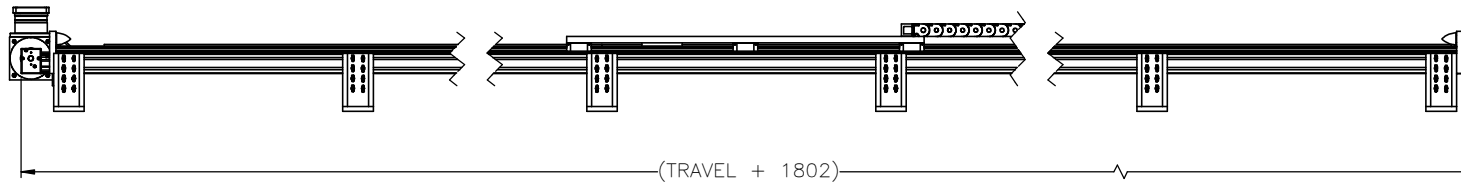
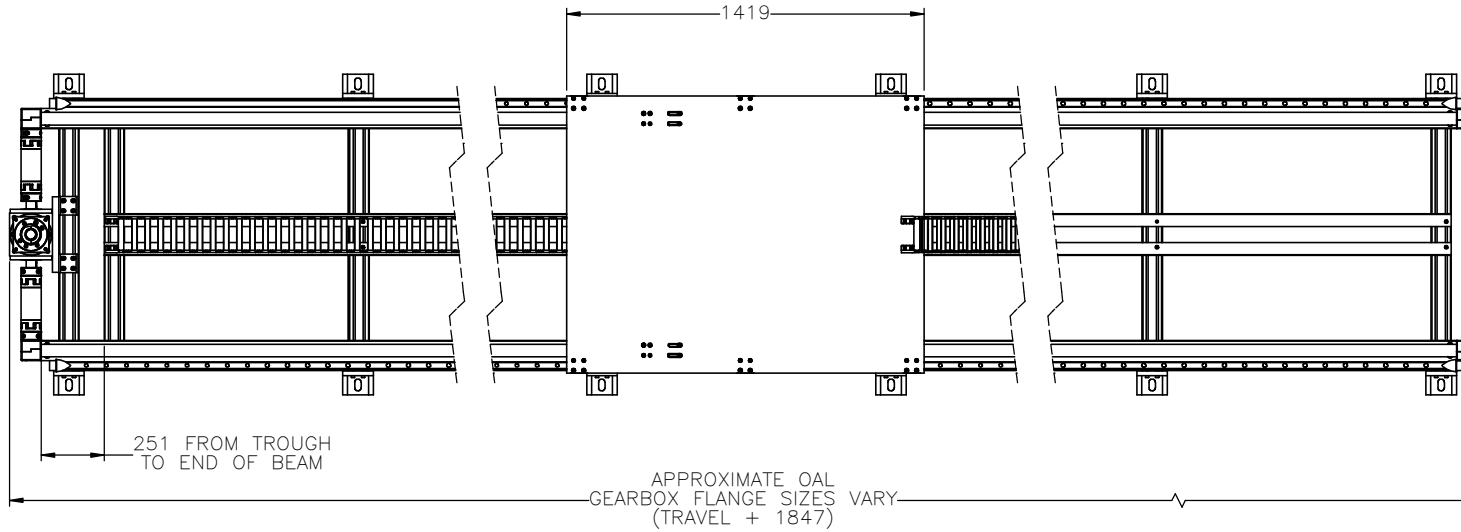



KIT INCLUDES – SENSOR, CORDSET EXTENSION, AND MOUNTING HARDWARE



<p>MACRON DYNAMICS INC</p> <p>THIS DRAWING IS THE PROPERTY OF MACRON DYNAMICS. ANY REPRODUCTIONS SHALL BE FOR QUOTATION, MANUFACTURING, OR PURCHASING PURPOSES ONLY. RELEASE OF DRAWINGS TO OTHER CONCERNS DOES NOT CONSTITUTE LICENSING IN ANY WAY. INFORMATION CONTAINED HEREIN IS PROPRIETARY AND CONFIDENTIAL.</p>	DRAWN BY: JA CHECKED BY: -- LAST SAVED BY: JA	DATE: 2/27/2020 DATE: DD/MM/YYYY DATE: 12/21/2021	MATERIAL: FINISH:	TITLE: T-SLOT SENSOR KIT
	UNLESS OTHERWISE SPECIFIED, DIMENSIONS ARE IN MILLIMETERS. TOLERANCES UNLESS NOTED OTHERWISE:		SCALE 1:1 SHEET SIZE C	SHEET 5 OF 5
	SURFACE FINISH \checkmark		PART NUMBER	REV
	BREAK ALL SHARP EDGES DIMENSIONAL LIMITS APPLY AFTER FINISHING THIRD ANGLE PROJECTION		SENSOR CALL-OUT	

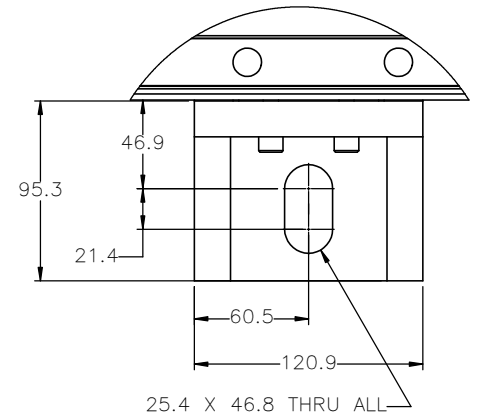
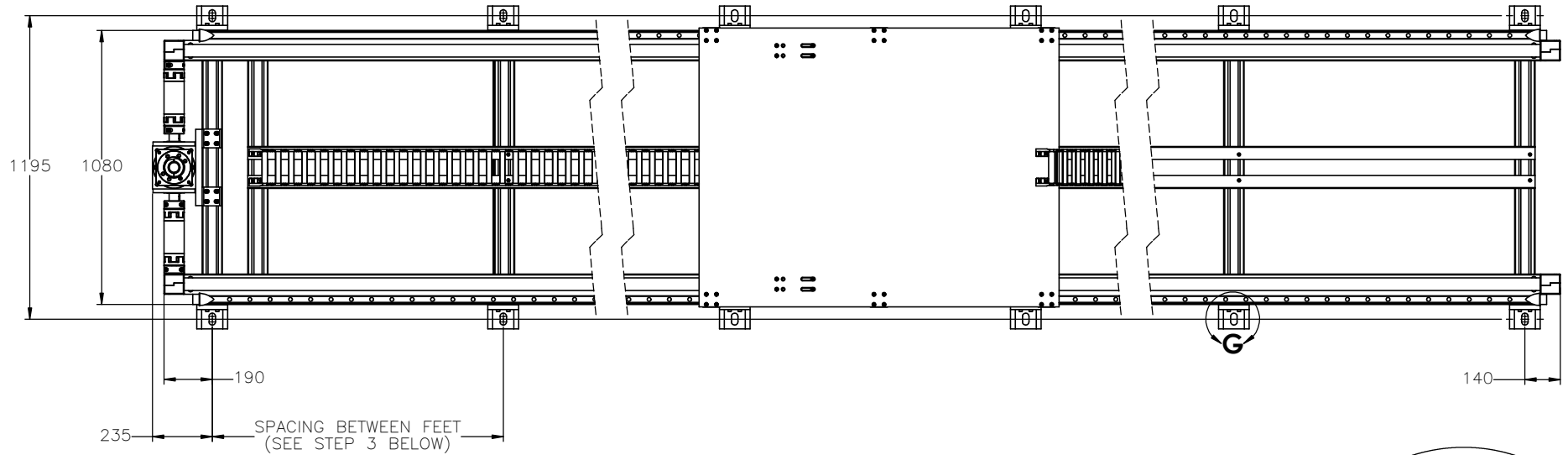
GANTRY FOOTPRINT



 MACRON DYNAMICS INC	DRAWN BY: AW DATE: 8/18/2023	MATERIAL:	TITLE: MACRON RTU SYSTEM
	CHECKED BY: DATE: DD/MM/YYYY	FINISH:	
	LAST SAVED BY: awong DATE: 9/27/2023	UNLESS OTHERWISE SPECIFIED: DIMENSIONS ARE IN MILLIMETERS TOLERANCES UNLESS NOTED: .XX ± .762 .XXX ± .254 OTHERWISE: ANG ± 0°30'	SCALE: 1:1 SHEET SIZE: C
	THIS DRAWING IS THE PROPERTY OF MACRON DYNAMICS. ANY REPRODUCTIONS SHALL BE FOR QUOTATION, MANUFACTURING, OR PURCHASING PURPOSES ONLY. RELEASE OF DRAWINGS TO OTHER CONCERNS DOES NOT CONSTITUTE LICENSING IN ANY WAY. INFORMATION CONTAINED HEREIN IS PROPRIETARY AND CONFIDENTIAL.	SURFACE FINISH: <input checked="" type="checkbox"/> BREAK ALL SHARP EDGES DIMENSIONAL LIMITS APPLY AFTER FINISHING THIRD ANGLE PROJECTION	SHEET: 2 OF 6 PART NUMBER: MRA-RTU-3-0-00-A01-XXXX

GANTRY MOUNTING FEATURES


TOP VIEW



DETAIL G
SCALE 1 : 2

TO DETERMINE SPACING BETWEEN MOUNTING FEET FRAMES

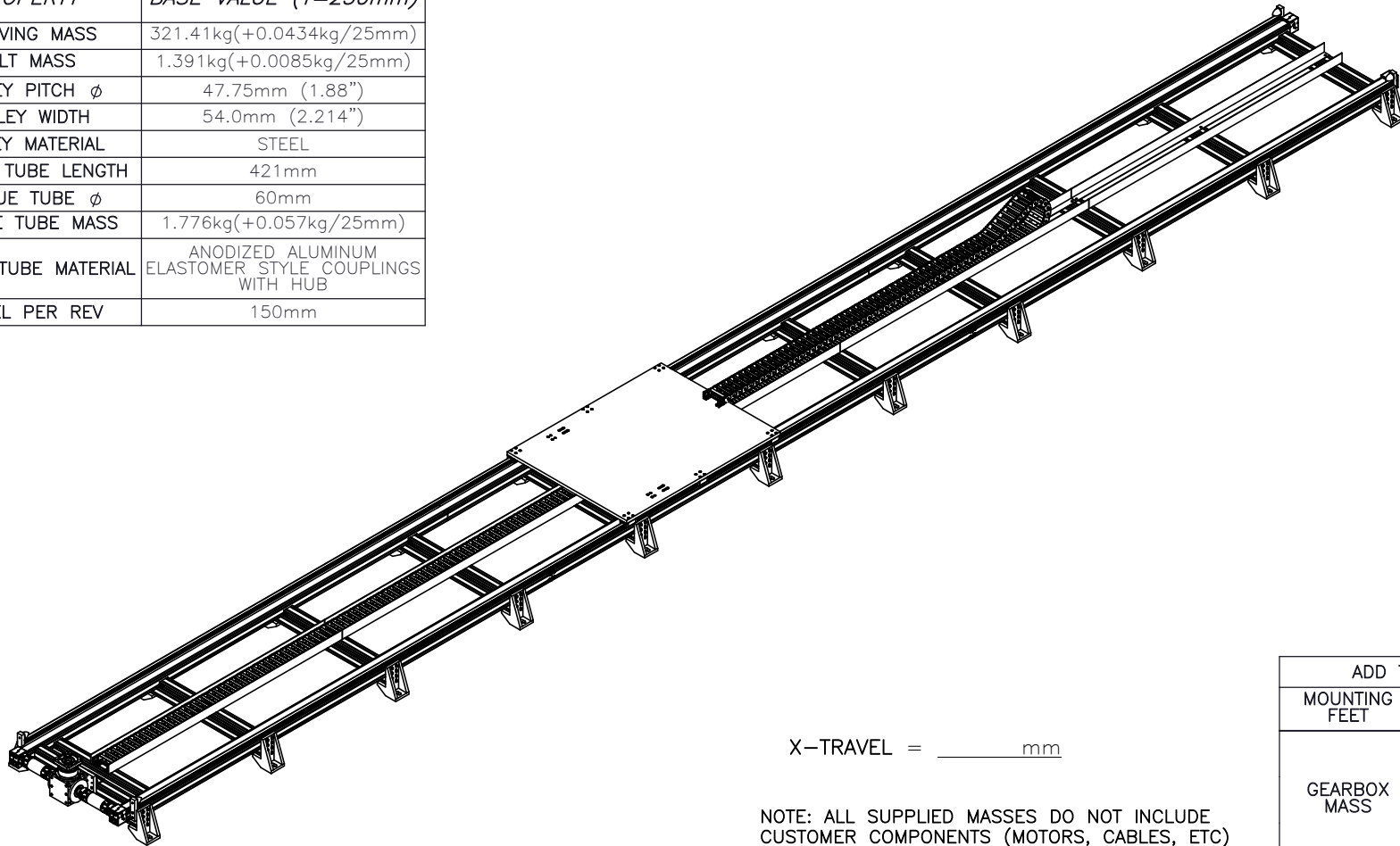
- 1) FIND "TL" (TOTAL LENGTH) = X-TRAVEL + 1802mm
- 2) FIND "NF" (NUMBER OF FEET) = ("TL"-330) / 1000 (ROUND UP)
(EXAMPLE: (8000mm + 1802mm - 330) / 1000 = 9.47 = 10 FEET FRAMES)
- 3) SPACING BETWEEN FEET = ("TL" - 330) / "NF"
(EXAMPLE: (9802mm - 330) / 10 = 948.5 ≈ 949mm)

 MACRON DYNAMICS INC	DRAWN BY: AW DATE: 8/18/2023	MATERIAL:	TITLE: MACRON RTU SYSTEM
	CHECKED BY: DATE: DD/MM/YYYY	FINISH:	
	LAST SAVED BY: awong DATE: 9/27/2023	UNLESS OTHERWISE SPECIFIED: DIMENSIONS ARE IN MILLIMETERS .XX ± .254 TOLERANCES UNLESS NOTED .XXX ± .127 OTHERWISE: ANG ± 0°30'	
SURFACE FINISH ✓		SHEET: 3 OF 6 PART NUMBER: MRA-RTU-3-0-00-A01-XXXX	SCALE: 1:1 SHEET SIZE: C
THIS DRAWING IS THE PROPERTY OF MACRON DYNAMICS. ANY REPRODUCTIONS SHALL BE FOR QUOTATION, MANUFACTURING, OR PURCHASING PURPOSES ONLY. RELEASE OF DRAWINGS TO OTHER CONCERNS DOES NOT CONSTITUTE LICENSING IN ANY WAY. INFORMATION CONTAINED HEREIN IS PROPRIETARY AND CONFIDENTIAL.		BREAK ALL SHARP EDGES DIMENSIONAL LIMITS APPLY AFTER FINISHING THIRD ANGLE PROJECTION	

MOTOR SIZING WORKSHEET

(INCREMENTAL ADDERS REFER TO MASS PER TRAVEL LENGTH)


PROPERTY	BASE VALUE (T=250mm)
**MOVING MASS	321.41kg(+0.0434kg/25mm)
BELT MASS	1.391kg(+0.0085kg/25mm)
PULLEY PITCH ϕ	47.75mm (1.88")
PULLEY WIDTH	54.0mm (2.214")
PULLEY MATERIAL	STEEL
TORQUE TUBE LENGTH	421mm
TORQUE TUBE ϕ	60mm
TORQUE TUBE MASS	1.776kg(+0.057kg/25mm)
TORQUE TUBE MATERIAL	ANODIZED ALUMINUM ELASTOMER STYLE COUPLINGS WITH HUB
TRAVEL PER REV	150mm



X-TRAVEL = _____ mm

NOTE: ALL SUPPLIED MASSES DO NOT INCLUDE CUSTOMER COMPONENTS (MOTORS, CABLES, ETC)

ADD TO SYSTEM MASS		
MOUNTING FEET	(QTY.)	24.6kg EACH
GEARBOX MASS	ATB-170 (1 STAGE)	35.5kg
	ATB-170 (2 STAGE)	37.9kg
	ATB-170 (3 STAGE)	38.2kg

TOTAL SYSTEM MASS	$(X-TRAVEL \times .0719) + 452.793 = \text{kg}$		
 MACRON DYNAMICS INC	DRAWN BY: AW	DATE: 8/18/2023	MATERIAL:
	CHECKED BY:	DATE: DD/MM/YYYY	
	LAST SAVED BY: awong	DATE: 9/27/2023	
	<small>UNLESS OTHERWISE SPECIFIED, DIMENSIONS ARE IN MILLIMETERS. TOLERANCES UNLESS NOTED OTHERWISE:</small> .X ± .762 .XX ± .254 .XXX ± .127 ANG ± 0°30'		FINISH:
<small>THIS DRAWING IS THE PROPERTY OF MACRON DYNAMICS. ANY REPRODUCTIONS SHALL BE FOR QUOTATION, MANUFACTURING OR PURCHASING PURPOSES ONLY. RELEASE OF DRAWINGS TO OTHER CONCERNS DOES NOT CONSTITUTE LICENSING IN ANY WAY. INFORMATION CONTAINED HEREIN IS PROPRIETARY AND CONFIDENTIAL.</small>	SURFACE FINISH <input checked="" type="checkbox"/>	BREAK ALL SHARP EDGES DIMENSIONAL LIMITS APPLY AFTER FINISHING	TITLE: MACRON RTU SYSTEM
	THIRD ANGLE PROJECTION	SHEET 4 OF 6	PART NUMBER: MRA-RTU-3-0-00-A01-XXXX SCALE: 1:1 SHEET SIZE: C

SPECIFICATIONS

Sensor Type	Inductive
Sensor Size	Fits all 8mm wide T-Slots
Operating Voltage	10-30 VDC
Voltage Drop Across Conducting Sensor	≤1.8 V at 100 mA
Number of Conductors (AWG)	3x26 AWG
Temperature Range	-40°C to 105°C

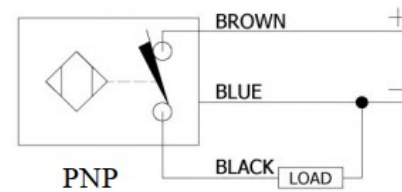
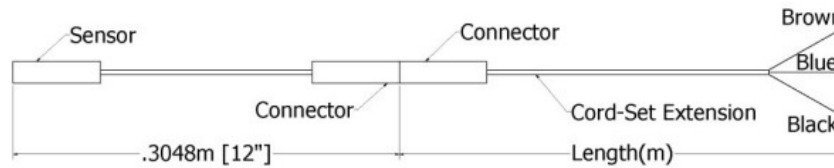
Part Number Configuration

244- _ _ - _ _ - _ _

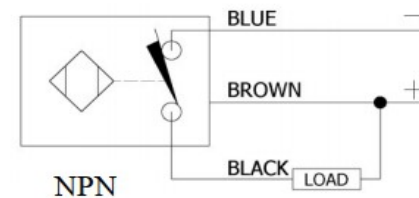
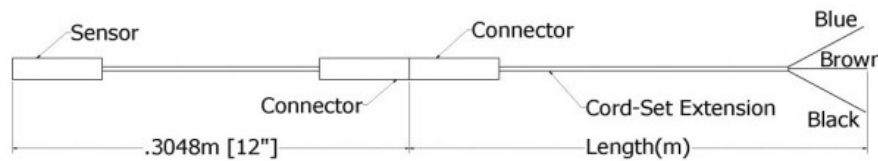
PNP or NPN	NC or NO	02	Meters
PNP or NPN	NC or NO	06	Meters
PNP or NPN	NC or NO	12	Meters

Example: PNP, normally closed, cord-set extension length 6 meters = 244-PNP-NC-06

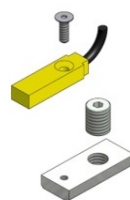
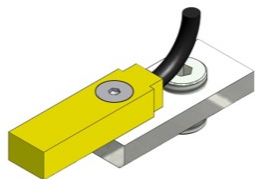
PNP Diagrams



NPN Diagrams



KIT INCLUDES – SENSOR, CORDSET EXTENSION, AND MOUNTING HARDWARE



	DRAWN BY: AW DATE: 8/18/2023 CHECKED BY: DATE: DD/MM/YYYY LAST SAVED BY: awong DATE: 9/27/2023	MATERIAL:	TITLE:	
	UNLESS OTHERWISE SPECIFIED, DIMENSIONS ARE IN MILLIMETERS. TOLERANCES UNLESS NOTED OTHERWISE:	FINISH:	T-SLOT SENSOR KIT	
	SURFACE FINISH <input checked="" type="checkbox"/> BREAK ALL SHARP EDGES DIMENSIONAL LIMITS APPLY AFTER FINISHING	SHEET: 5 OF 6 PART NUMBER:	SCALE: 1:1	SHEET SIZE: C
	THIRD ANGLE PROJECTION	REV:		